

Anti-IL7R antibody (380-460) (STJ93706)

STJ93706

GENERAL INFORMATION

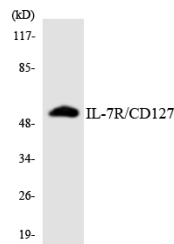
Product Type	Primary antibodies
Short Description	Rabbit polyclonal antibody anti-Interleukin-7 Receptor Subunit Alpha (380-460) is suitable for use in Western Blot and ELISA research applications.
Applications	WB, ELISA
Host/Source	Rabbit
Reactivity	Human, Mouse, Monkey

PRODUCT PROPERTIES

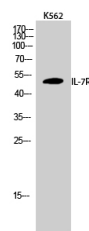
Clonality	Polyclonal
Clone ID	
Concentration	1 mg/mL
Conjugation	Unconjugated
Purification	The antibody was affinity-purified from rabbit anti-serum by affinity-chromatography.
Dilution Range	WB 1:500-1:2000 ELISA 1:40000
Formulation	PBS, 50% Glycerol, 0.5% BSA and 0.02% Sodium Azide.
Isotype	IgG
Storage	Store at -20°C for up to 1 year from the date of receipt, and avoid repeat freeze-thaw cycles.
Instruction	

TARGET INFORMATION

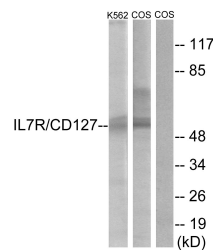
Gene ID	3575
Gene Symbol	IL7R
Uniprot ID	IL7RA_HUMAN
Immunogen	The antiserum was produced against synthesized peptide derived from human IL-7R/CD127 at amino acid range 410-459
Immunogen Region	380-460
Specificity	IL7R polyclonal antibody (Interleukin-7 Receptor Subunit Alpha) binds to endogenous Interleukin-7 Receptor Subunit Alpha at the amino acid region 380-460.
Immunogen Sequence	



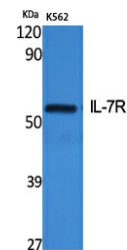
Western blot analysis of the lysates from Jurkat cells using IL-7R/CD127 antibody.



Western blot analysis of K562 cells using IL-7R Polyclonal Antibody



Western blot analysis of lysates from K562 and COS cells, treated with insulin 0.01U/ml 15', using IL-7R/CD127 Antibody. The lane on the right is blocked with the synthesized peptide.



Western blot analysis of various cells using IL-7R Polyclonal Antibody

This product is suitable for in-vitro studies under the RESEARCH USE ONLY [RUO] licence. This product must not be used as for diagnostic or other medical purposes.
St John's Laboratory Ltd, Knowledge Dock Business Centre, University Way, London, E16 2RD | Tel: 0208 223 3081