

## Anti-IL4R antibody (440-520) (STJ93702)

STJ93702

### GENERAL INFORMATION

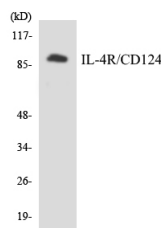
<b>Product Type</b>	Primary antibodies
<b>Short Description</b>	Rabbit polyclonal antibody anti-Interleukin-4 Receptor Subunit Alpha (440-520) is suitable for use in Western Blot, Immunofluorescence, Immunocytochemistry and ELISA research applications.
<b>Applications</b>	WB, IF, ICC, ELISA
<b>Host/Source</b>	Rabbit
<b>Reactivity</b>	Human, Mouse

### PRODUCT PROPERTIES

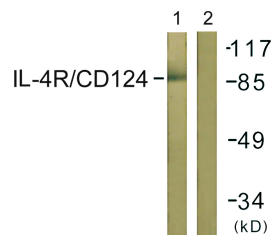
<b>Clonality</b>	Polyclonal
<b>Clone ID</b>	
<b>Concentration</b>	1 mg/mL
<b>Conjugation</b>	Unconjugated
<b>Purification</b>	The antibody was affinity-purified from rabbit anti-serum by affinity-chromatography.
<b>Dilution Range</b>	WB 1:500-1:2000 IF 1:200-1:1000 ELISA 1:20000
<b>Formulation</b>	PBS, 50% Glycerol, 0.5% BSA and 0.02% Sodium Azide.
<b>Isotype</b>	IgG
<b>Storage Instruction</b>	Store at -20°C for up to 1 year from the date of receipt, and avoid repeat freeze-thaw cycles.

### TARGET INFORMATION

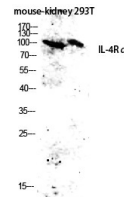
<b>Gene ID</b>	3566
<b>Gene Symbol</b>	IL4R
<b>Uniprot ID</b>	IL4RA_HUMAN
<b>Immunogen</b>	The antiserum was produced against synthesized peptide derived from human IL-4R/CD124 at amino acid range 463-512
<b>Immunogen Region</b>	440-520
<b>Specificity</b>	IL4R polyclonal antibody (Interleukin-4 Receptor Subunit Alpha) binds to endogenous Interleukin-4 Receptor Subunit Alpha at the amino acid region 440-520.
<b>Immunogen Sequence</b>	



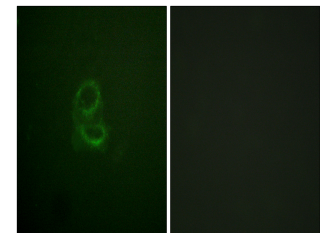
Western blot analysis of the lysates from HUVEC cells using IL-4R/CD124 antibody.



Western blot analysis of lysates from 293 cells, using IL-4R/CD124 Antibody. The lane on the right is blocked with the synthesized peptide.



Western blot analysis of mouse-kidney 293T lysis using IL-4R Alpha antibody. Antibody was diluted at 1:2000



Immunofluorescence analysis of A549 cells, using IL-4R/CD124 Antibody. The picture on the right is blocked with the synthesized peptide.

This product is suitable for in-vitro studies under the RESEARCH USE ONLY [RUO] licence. This product must not be used as for diagnostic or other medical purposes.  
St John's Laboratory Ltd, Knowledge Dock Business Centre, University Way, London, E16 2RD | Tel: 0208 223 3081