

Anti-IL20RB antibody (110-190 Internal) (STJ93691)

STJ93691

GENERAL INFORMATION

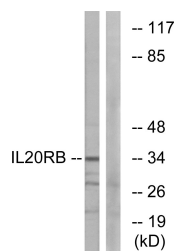
Product Type	Primary antibodies
Short Description	Rabbit polyclonal antibody anti-Interleukin-20 Receptor Subunit Beta (110-190 Internal) is suitable for use in Western Blot, Immunohistochemistry, Immunofluorescence and ELISA research applications.
Applications	WB, IHC-P, IF-P, ELISA
Host/Source	Rabbit
Reactivity	Human, Mouse

PRODUCT PROPERTIES

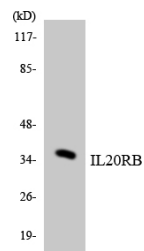
Clonality	Polyclonal
Clone ID	
Concentration	1 mg/mL
Conjugation	Unconjugated
Purification	The antibody was affinity-purified from rabbit anti-serum by affinity-chromatography.
Dilution Range	WB 1:500-1:2000 IHC 1:100-1:300 ELISA 1:20000
Formulation	PBS, 50% Glycerol, 0.5% BSA and 0.02% Sodium Azide.
Isotype	IgG
Storage Instruction	Store at -20°C for up to 1 year from the date of receipt, and avoid repeat freeze-thaw cycles.

TARGET INFORMATION

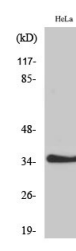
Gene ID	53833
Gene Symbol	IL20RB
Uniprot ID	I20RB_HUMAN
Immunogen	The antiserum was produced against synthesized peptide derived from human IL20RB at amino acid range 141-190
Immunogen Region	110-190 Internal
Specificity	IL20RB polyclonal antibody (Interleukin-20 Receptor Subunit Beta) binds to endogenous Interleukin-20 Receptor Subunit Beta at the amino acid region 110-190 Internal.
Immunogen Sequence	



Western blot analysis of lysates from HeLa cells, using IL20RB Antibody. The lane on the right is blocked with the synthesized peptide.



Western blot analysis of the lysates from COLO205 cells using IL20RB antibody.



Western blot analysis of various cells using IL-20R Beta Polyclonal Antibody.

This product is suitable for in-vitro studies under the RESEARCH USE ONLY [RUO] licence. This product must not be used as for diagnostic or other medical purposes.
St John's Laboratory Ltd, Knowledge Dock Business Centre, University Way, London, E16 2RD | Tel: 0208 223 3081