

Anti-IL20RA antibody (Internal) (STJ93690)

STJ93690

GENERAL INFORMATION

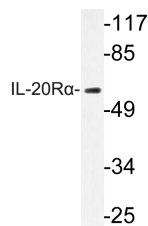
Product Type	Primary antibodies
Short Description	Rabbit polyclonal antibody anti-Interleukin-20 Receptor Subunit Alpha (Internal) is suitable for use in Western Blot, Immunohistochemistry, Immunofluorescence and ELISA research applications.
Applications	WB, IHC-P, IF-P, ELISA
Host/Source	Rabbit
Reactivity	Human, Rat, Mouse

PRODUCT PROPERTIES

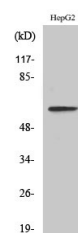
Clonality	Polyclonal
Clone ID	
Concentration	1 mg/mL
Conjugation	Unconjugated
Purification	The antibody was affinity-purified from rabbit anti-serum by affinity-chromatography.
Dilution Range	WB 1:500-1:2000 IHC 1:100-1:300 ELISA 1:40000
Formulation	PBS, 50% Glycerol, 0.5% BSA and 0.02% Sodium Azide.
Isotype	IgG
Storage Instruction	Store at -20°C for up to 1 year from the date of receipt, and avoid repeat freeze-thaw cycles.

TARGET INFORMATION

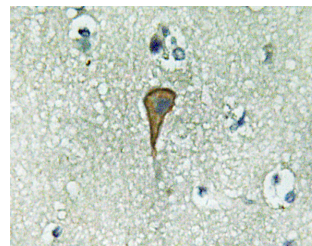
Gene ID	53832
Gene Symbol	IL20RA
Uniprot ID	I20RA_HUMAN
Immunogen	The antiserum was produced against synthesized peptide derived from human IL-20Ralpha at amino acid range 173-222
Immunogen Region	Internal
Specificity	IL20RA polyclonal antibody (Interleukin-20 Receptor Subunit Alpha) binds to endogenous Interleukin-20 Receptor Subunit Alpha at the amino acid region Internal.
Immunogen Sequence	



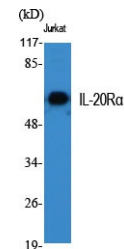
Western blot analysis of lysate from HepG2 cells, using IL-20R Alpha antibody.



Western blot analysis of LOVO cells using IL-20R Alpha Polyclonal Antibody



Immunohistochemistry analysis of IL-20R Alpha antibody in paraffin-embedded human brain tissue.



Western blot analysis of various cells using IL-20R Alpha Polyclonal Antibody

This product is suitable for in-vitro studies under the RESEARCH USE ONLY [RUO] licence. This product must not be used as for diagnostic or other medical purposes.
St John's Laboratory Ltd, Knowledge Dock Business Centre, University Way, London, E16 2RD | Tel: 0208 223 3081