

## Anti-IL12B antibody (Internal) (STJ93677)

STJ93677

### GENERAL INFORMATION

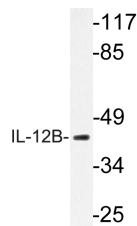
<b>Product Type</b>	Primary antibodies
<b>Short Description</b>	Rabbit polyclonal antibody anti-Interleukin-12 Subunit Beta (Internal) is suitable for use in Western Blot and ELISA research applications.
<b>Applications</b>	WB, ELISA
<b>Host/Source</b>	Rabbit
<b>Reactivity</b>	Human, Rat, Mouse

### PRODUCT PROPERTIES

<b>Clonality</b>	Polyclonal
<b>Clone ID</b>	
<b>Concentration</b>	1 mg/mL
<b>Conjugation</b>	Unconjugated
<b>Purification</b>	The antibody was affinity-purified from rabbit anti-serum by affinity-chromatography.
<b>Dilution Range</b>	WB 1:500-1:2000 ELISA 1:5000
<b>Formulation</b>	PBS, 50% Glycerol, 0.5% BSA and 0.02% Sodium Azide.
<b>Isotype</b>	IgG
<b>Storage Instruction</b>	Store at -20°C for up to 1 year from the date of receipt, and avoid repeat freeze-thaw cycles.

### TARGET INFORMATION

<b>Gene ID</b>	<a href="#">3593</a>
<b>Gene Symbol</b>	<a href="#">IL12B</a>
<b>Uniprot ID</b>	<a href="#">IL12B_HUMAN</a>
<b>Immunogen</b>	The antiserum was produced against synthesized peptide derived from human IL-12B at amino acid range 228-277
<b>Immunogen Region</b>	Internal
<b>Specificity</b>	IL12B polyclonal antibody (Interleukin-12 Subunit Beta) binds to endogenous Interleukin-12 Subunit Beta at the amino acid region Internal.
<b>Immunogen Sequence</b>	



Western blot analysis of lysate from K562 cells, using IL-12B antibody.