

Anti-IL12A antibody (Internal) (STJ93676)

STJ93676

GENERAL INFORMATION

Product Type	Primary antibodies
Short Description	Rabbit polyclonal antibody anti-Interleukin-12 Subunit Alpha (Internal) is suitable for use in Western Blot, Immunohistochemistry, Immunofluorescence and ELISA research applications.
Applications	WB, IHC-P, IF-P, ELISA
Host/Source	Rabbit
Reactivity	Human, Mouse, Rat

PRODUCT PROPERTIES

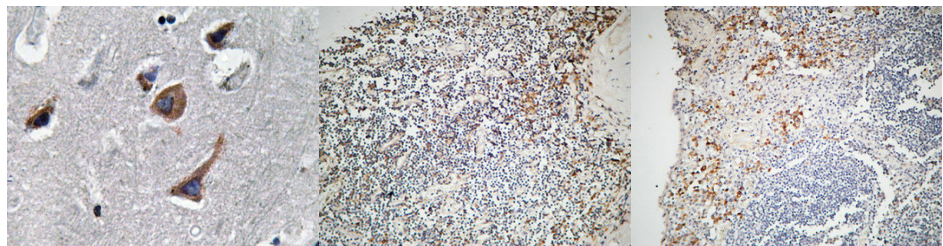
Clonality	Polyclonal
Clone ID	
Concentration	1 mg/mL
Conjugation	Unconjugated
Purification	The antibody was affinity-purified from rabbit anti-serum by affinity-chromatography.
Dilution Range	WB 1:500-1:2000 IHC1:50-300 ELISA 1:20000
Formulation	PBS, 50% Glycerol, 0.5% BSA and 0.02% Sodium Azide.
Isotype	IgG
Storage Instruction	Store at -20°C for up to 1 year from the date of receipt, and avoid repeat freeze-thaw cycles.

TARGET INFORMATION

Gene ID	3592
Gene Symbol	IL12A
Uniprot ID	IL12A_HUMAN
Immunogen	The antiserum was produced against synthesized peptide derived from human IL-12A at amino acid range 16-65
Immunogen Region	Internal
Specificity	IL12A polyclonal antibody (Interleukin-12 Subunit Alpha) binds to endogenous Interleukin-12 Subunit Alpha at the amino acid region Internal.
Immunogen Sequence	

-117
-85
-49
-34
IL-12A- -25
-19

Western blot analysis of lysate from HeLa cells, using IL-12A antibody.



Immunohistochemistry analysis of IL-12A antibody in paraffin-embedded human brain tissue.

Immunohistochemical analysis of paraffin-embedded Human Amygdala. 1. Antibody was diluted at 1:200 (4°C overnight), 2. High-pressure and temperature EDTA, pH8.0 was used for antigen retrieval. 3. Secondary antibody was diluted at 1:200 (room temperature, 30min).

Immunohistochemical analysis of paraffin-embedded Human Amygdala. 1. Antibody was diluted at 1:200 (4°C overnight), 2. High-pressure and temperature EDTA, pH8.0 was used for antigen retrieval. 3. Secondary antibody was diluted at 1:200 (room temperature, 30min).

This product is suitable for in-vitro studies under the RESEARCH USE ONLY [RUO] licence. This product must not be used as for diagnostic or other medical purposes.
St John's Laboratory Ltd, Knowledge Dock Business Centre, University Way, London, E16 2RD | Tel: 0208 223 3081