

Anti-IL11RA antibody (300-380 C-Term) (STJ93675)

STJ93675

GENERAL INFORMATION

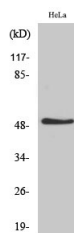
Product Type	Primary antibodies
Short Description	Rabbit polyclonal antibody anti-Interleukin-11 Receptor Subunit Alpha (300-380 C-Term) is suitable for use in Western Blot and ELISA research applications.
Applications	WB, ELISA
Host/Source	Rabbit
Reactivity	Human, Rat, Mouse

PRODUCT PROPERTIES

Clonality	Polyclonal
Clone ID	
Concentration	1 mg/mL
Conjugation	Unconjugated
Purification	The antibody was affinity-purified from rabbit anti-serum by affinity-chromatography.
Dilution Range	WB 1:500-1:2000 ELISA 1:20000
Formulation	PBS, 50% Glycerol, 0.5% BSA and 0.02% Sodium Azide.
Isotype	IgG
Storage Instruction	Store at -20°C for up to 1 year from the date of receipt, and avoid repeat freeze-thaw cycles.

TARGET INFORMATION

Gene ID	3590
Gene Symbol	IL11RA
Uniprot ID	I11RA_HUMAN
Immunogen	Synthesized peptide derived from IL-11R Alpha. at amino acid range: 300-380
Immunogen Region	300-380 C-Term
Specificity	IL11RA polyclonal antibody (Interleukin-11 Receptor Subunit Alpha) binds to endogenous Interleukin-11 Receptor Subunit Alpha at the amino acid region 300-380 C-Term.
Immunogen Sequence	



Western blot analysis of various cells using IL-11R Alpha Polyclonal Antibody