

Anti-IKBKB antibody (140-220) (STJ93669)

STJ93669

GENERAL INFORMATION

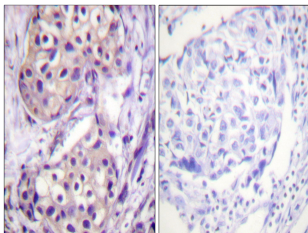
Product Type	Primary antibodies
Short Description	Rabbit polyclonal antibody anti-Inhibitor Of Nuclear Factor Kappa-B Kinase Subunit Beta (140-220) is suitable for use in Immunohistochemistry, Immunofluorescence and ELISA research applications.
Applications	IHC-P, IF-P, ELISA
Host/Source	Rabbit
Reactivity	Human, Mouse, Rat

PRODUCT PROPERTIES

Clonality	Polyclonal
Clone ID	
Concentration	1 mg/mL
Conjugation	Unconjugated
Purification	The antibody was affinity-purified from rabbit anti-serum by affinity-chromatography.
Dilution	IHC 1:100-1:300
Range	ELISA 1:10000
Formulation	PBS, 50% Glycerol, 0.5% BSA and 0.02% Sodium Azide.
Isotype	IgG
Storage	Store at -20°C for up to 1 year from the date of receipt, and avoid repeat freeze-thaw cycles.
Instruction	

TARGET INFORMATION

Gene ID	3551
Gene Symbol	IKKB
Uniprot ID	IKKB_HUMAN
Immunogen	The antiserum was produced against synthesized peptide derived from human IKK-beta at amino acid range 166-215
Immunogen Region	140-220
Specificity	IKKB polyclonal antibody (Inhibitor Of Nuclear Factor Kappa-B Kinase Subunit Beta) binds to endogenous Inhibitor Of Nuclear Factor Kappa-B Kinase Subunit Beta at the amino acid region 140-220.
Immunogen Sequence	



Immunohistochemistry analysis of paraffin-embedded human breast carcinoma tissue, using IKK-beta Antibody. The picture on the right is blocked with the synthesized peptide.