

Anti-KCNN4 antibody (300-380 C-Term) (STJ93663)

STJ93663

GENERAL INFORMATION

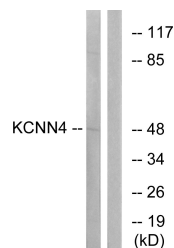
| | |
|--------------------------|--|
| Product Type | Primary antibodies |
| Short Description | Rabbit polyclonal antibody anti-Intermediate Conductance Calcium-Activated Potassium Channel Protein 4 (300-380 C-Term) is suitable for use in Western Blot and ELISA research applications. |
| Applications | WB, ELISA |
| Host/Source | Rabbit |
| Reactivity | Human, Mouse, Rat |

PRODUCT PROPERTIES

| | |
|----------------------------|--|
| Clonality | Polyclonal |
| Clone ID | |
| Concentration | 1 mg/mL |
| Conjugation | Unconjugated |
| Purification | The antibody was affinity-purified from rabbit anti-serum by affinity-chromatography. |
| Dilution | WB 1:500-1:2000 |
| Range | ELISA 1:20000 |
| Formulation | PBS, 50% Glycerol, 0.5% BSA and 0.02% Sodium Azide. |
| Isotype | IgG |
| Storage Instruction | Store at -20°C for up to 1 year from the date of receipt, and avoid repeat freeze-thaw cycles. |

TARGET INFORMATION

| | |
|---------------------------|--|
| Gene ID | 3783 |
| Gene Symbol | KCNN4 |
| Uniprot ID | KCNN4_HUMAN |
| Immunogen | The antiserum was produced against synthesized peptide derived from human KCNN4 at amino acid range 331-380 |
| Immunogen Region | 300-380 C-Term |
| Specificity | KCNN4 polyclonal antibody (Intermediate Conductance Calcium-Activated Potassium Channel Protein 4) binds to endogenous Intermediate Conductance Calcium-Activated Potassium Channel Protein 4 at the amino acid region 300-380 C-Term. |
| Immunogen Sequence | |



Western blot analysis of lysates from HepG2 cells, using KCNN4 Antibody. The lane on the right is blocked with the synthesized peptide.