

Anti-CADM2 antibody (100-180 Internal) (STJ93661)

STJ93661

GENERAL INFORMATION

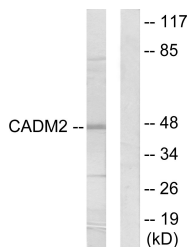
Product Type	Primary antibodies
Short Description	Rabbit polyclonal antibody anti-Cell Adhesion Molecule 2 (100-180 Internal) is suitable for use in Western Blot, Immunohistochemistry, Immunofluorescence, Immunocytochemistry and ELISA research applications.
Applications	WB, IHC-P, IF, ICC, ELISA
Host/Source	Rabbit
Reactivity	Human, Mouse, Rat

PRODUCT PROPERTIES

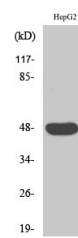
Clonality	Polyclonal
Clone ID	
Concentration	1 mg/mL
Conjugation	Unconjugated
Purification	The antibody was affinity-purified from rabbit anti-serum by affinity-chromatography.
Dilution Range	WB 1:500-1:2000 IHC 1:100-1:300 IF 1:200-1:1000 ELISA 1:10000
Formulation	PBS, 50% Glycerol, 0.5% BSA and 0.02% Sodium Azide.
Isotype	IgG
Storage Instruction	Store at -20°C for up to 1 year from the date of receipt, and avoid repeat freeze-thaw cycles.

TARGET INFORMATION

Gene ID	253559
Gene Symbol	CADM2
Uniprot ID	CADM2_HUMAN
Immunogen	The antiserum was produced against synthesized peptide derived from human CADM2 at amino acid range 131-180
Immunogen Region	100-180 Internal
Specificity	CADM2 polyclonal antibody (Cell Adhesion Molecule 2) binds to endogenous Cell Adhesion Molecule 2 at the amino acid region 100-180 Internal.
Immunogen Sequence	



Western blot analysis of lysates from HepG2 cells, using CADM2 Antibody. The lane on the right is blocked with the synthesized peptide.



Western blot analysis of various cells using IGSF4D Polyclonal Antibody

This product is suitable for in-vitro studies under the RESEARCH USE ONLY [RUO] licence. This product must not be used as for diagnostic or other medical purposes.
St John's Laboratory Ltd, Knowledge Dock Business Centre, University Way, London, E16 2RD | Tel: 0208 223 3081