

Anti-IGF2R antibody (2410-2490) (STJ93655)

STJ93655

GENERAL INFORMATION

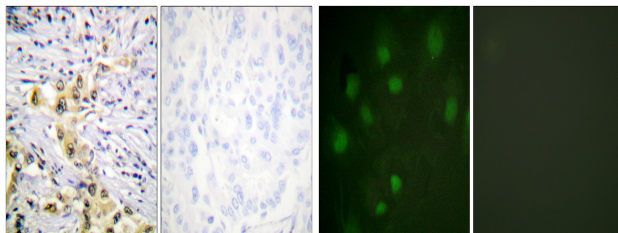
Product Type	Primary antibodies
Short Description	Rabbit polyclonal antibody anti-Cation-Independent Mannose-6-Phosphate Receptor (2410-2490) is suitable for use in Immunohistochemistry, Immunofluorescence, Immunocytochemistry and ELISA research applications.
Applications	IHC-P, IF, ICC, ELISA
Host/Source	Rabbit
Reactivity	Human, Mouse, Rat

PRODUCT PROPERTIES

Clonality	Polyclonal
Clone ID	
Concentration	1 mg/mL
Conjugation	Unconjugated
Purification	The antibody was affinity-purified from rabbit anti-serum by affinity-chromatography.
Dilution	IHC 1:100-1:300
Range	IF 1:200-1:1000 ELISA 1:20000
Formulation	PBS, 50% Glycerol, 0.5% BSA and 0.02% Sodium Azide.
Isotype	IgG
Storage Instruction	Store at -20°C for up to 1 year from the date of receipt, and avoid repeat freeze-thaw cycles.

TARGET INFORMATION

Gene ID	3482
Gene Symbol	IGF2R
Uniprot ID	MPRI_HUMAN
Immunogen	The antiserum was produced against synthesized peptide derived from human IGF2R at amino acid range 2441-2490
Immunogen Region	2410-2490
Specificity	IGF2R polyclonal antibody (Cation-Independent Mannose-6-Phosphate Receptor) binds to endogenous Cation-Independent Mannose-6-Phosphate Receptor at the amino acid region 2410-2490.
Immunogen Sequence	



Immunohistochemistry analysis of paraffin-embedded human lung carcinoma tissue, using IGF2R Antibody. The picture on the right is blocked with the synthesized peptide.

Immunofluorescence analysis of HeLa cells, using IGF2R Antibody. The picture on the right is blocked with the synthesized peptide.

This product is suitable for in-vitro studies under the RESEARCH USE ONLY [RUO] licence. This product must not be used as for diagnostic or other medical purposes.
St John's Laboratory Ltd, Knowledge Dock Business Centre, University Way, London, E16 2RD | Tel: 0208 223 3081