

Anti-IGFBP1 antibody (Internal) (STJ93650)

STJ93650

GENERAL INFORMATION

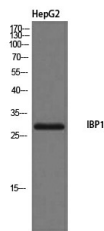
Product Type	Primary antibodies
Short Description	Rabbit polyclonal antibody anti-Insulin-Like Growth Factor-Binding Protein 1 (Internal) is suitable for use in Western Blot, Immunohistochemistry, Immunofluorescence and ELISA research applications.
Applications	WB, IHC-P, IF-P, ELISA
Host/Source	Rabbit
Reactivity	Human, Rat, Mouse

PRODUCT PROPERTIES

Clonality	Polyclonal
Clone ID	
Concentration	1 mg/mL
Conjugation	Unconjugated
Purification	The antibody was affinity-purified from rabbit anti-serum by affinity-chromatography.
Dilution	IHC 1:100-1:300
Range	ELISA 1:5000
Formulation	PBS, 50% Glycerol, 0.5% BSA and 0.02% Sodium Azide.
Isotype	IgG
Storage	Store at -20°C for up to 1 year from the date of receipt, and avoid repeat freeze-thaw cycles.
Instruction	

TARGET INFORMATION

Gene ID	3484
Gene Symbol	IGFBP1
Uniprot ID	IBP1_HUMAN
Immunogen	The antiserum was produced against synthesized peptide derived from human IBP1 at amino acid range 170-210
Immunogen Region	Internal
Specificity	IGFBP1 polyclonal antibody (Insulin-Like Growth Factor-Binding Protein 1) binds to endogenous Insulin-Like Growth Factor-Binding Protein 1 at the amino acid region Internal.
Immunogen Sequence	



Western blot analysis of HepG2 cells using IGFBP1 Polyclonal Antibody

This product is suitable for in-vitro studies under the RESEARCH USE ONLY [RUO] licence. This product must not be used as for diagnostic or other medical purposes.
St John's Laboratory Ltd, Knowledge Dock Business Centre, University Way, London, E16 2RD | Tel: 0208 223 3081