

Anti-IGF2BP2 antibody (110-190 Internal) (STJ93649)

STJ93649

GENERAL INFORMATION

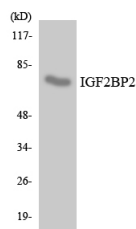
Product Type	Primary antibodies
Short Description	Rabbit polyclonal antibody anti-Insulin-Like Growth Factor 2 Mrna-Binding Protein 2 (110-190 Internal) is suitable for use in Western Blot and ELISA research applications.
Applications	WB, ELISA
Host/Source	Rabbit
Reactivity	Human, Rat, Mouse

PRODUCT PROPERTIES

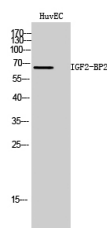
Clonality	Polyclonal
Clone ID	
Concentration	1 mg/mL
Conjugation	Unconjugated
Purification	The antibody was affinity-purified from rabbit anti-serum by affinity-chromatography.
Dilution	WB 1:500-1:2000
Range	ELISA 1:20000
Formulation	PBS, 50% Glycerol, 0.5% BSA and 0.02% Sodium Azide.
Isotype	IgG
Storage Instruction	Store at -20°C for up to 1 year from the date of receipt, and avoid repeat freeze-thaw cycles.

TARGET INFORMATION

Gene ID	10644
Gene Symbol	IGF2BP2
Uniprot ID	IF2B2_HUMAN
Immunogen	The antiserum was produced against synthesized peptide derived from human IGF2BP2 at amino acid range 141-190
Immunogen Region	110-190 Internal
Specificity	IGF2BP2 polyclonal antibody (Insulin-Like Growth Factor 2 Mrna-Binding Protein 2) binds to endogenous Insulin-Like Growth Factor 2 Mrna-Binding Protein 2 at the amino acid region 110-190 Internal.
Immunogen Sequence	



Western blot analysis of the lysates from Jurkat cells using IGF2BP2 antibody.



Western blot analysis of HuvEC cells using IGF2-BP2 Polyclonal Antibody

This product is suitable for in-vitro studies under the RESEARCH USE ONLY [RUO] licence. This product must not be used as for diagnostic or other medical purposes.
 St John's Laboratory Ltd, Knowledge Dock Business Centre, University Way, London, E16 2RD | Tel: 0208 223 3081