

## Anti-IgA antibody (Internal) (STJ93646)

STJ93646

### GENERAL INFORMATION

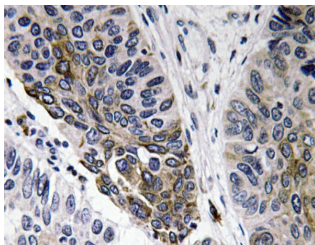
<b>Product Type</b>	Primary antibodies
<b>Short Description</b>	Rabbit polyclonal antibody anti-Immunoglobulin heavy constant alpha 1 and Immunoglobulin heavy constant alpha 2 (Internal) is suitable for use in Western Blot, Immunohistochemistry, Immunofluorescence and ELISA research applications.
<b>Applications</b>	WB, IHC-P, IF-P, ELISA
<b>Host/Source</b>	Rabbit
<b>Reactivity</b>	Human, Rat, Mouse

### PRODUCT PROPERTIES

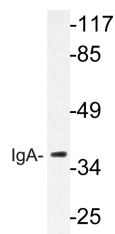
<b>Clonality</b>	Polyclonal
<b>Clone ID</b>	
<b>Concentration</b>	1 mg/mL
<b>Conjugation</b>	Unconjugated
<b>Purification</b>	The antibody was affinity-purified from rabbit anti-serum by affinity-chromatography.
<b>Dilution Range</b>	WB 1:500-1:2000 IHC 1:100-1:300 ELISA 1:40000
<b>Formulation</b>	PBS, 50% Glycerol, 0.5% BSA and 0.02% Sodium Azide.
<b>Isotype</b>	IgG
<b>Storage Instruction</b>	Store at -20°C for up to 1 year from the date of receipt, and avoid repeat freeze-thaw cycles.

### TARGET INFORMATION

<b>Gene ID</b>	NA NA
<b>Gene Symbol</b>	IGHA2 IGHA1
<b>Uniprot ID</b>	IGHA2_HUMAN IGHA1_HUMAN
<b>Immunogen</b>	The antiserum was produced against synthesized peptide derived from human IgA at amino acid range 227-276
<b>Immunogen Region</b>	Internal
<b>Specificity</b>	IgA polyclonal antibody (Immunoglobulin heavy constant alpha 1 and Immunoglobulin heavy constant alpha 2) binds to endogenous Immunoglobulin heavy constant alpha 1 and Immunoglobulin heavy constant alpha 2 at the amino acid region Internal.
<b>Immunogen Sequence</b>	



Immunohistochemistry analysis of IgA antibody in paraffin-embedded human lung carcinoma tissue.



Western blot analysis of lysate from HeLa cells, using IgA antibody.



Western blot analysis of various cells using IgA Polyclonal Antibody

This product is suitable for in-vitro studies under the RESEARCH USE ONLY [RUO] licence. This product must not be used as for diagnostic or other medical purposes.  
St John's Laboratory Ltd, Knowledge Dock Business Centre, University Way, London, E16 2RD | Tel: 0208 223 3081