

Anti-IFNGR1 antibody (400-480) (STJ93645)

STJ93645

GENERAL INFORMATION

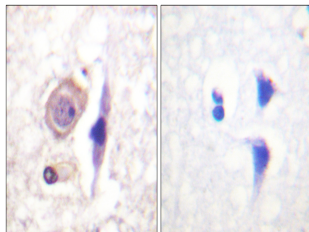
Product Type	Primary antibodies
Short Description	Rabbit polyclonal antibody anti-Interferon Gamma Receptor 1 (400-480) is suitable for use in Western Blot, Immunohistochemistry, Immunofluorescence, Immunocytochemistry and ELISA research applications.
Applications	WB, IHC-P, IF, ICC, ELISA
Host/Source	Rabbit
Reactivity	Human, Mouse, Rat, Monkey

PRODUCT PROPERTIES

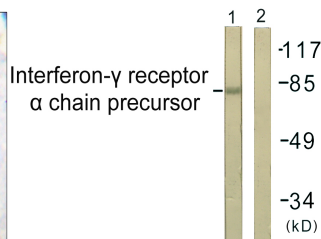
Clonality	Polyclonal
Clone ID	
Concentration	1 mg/mL
Conjugation	Unconjugated
Purification	The antibody was affinity-purified from rabbit anti-serum by affinity-chromatography.
Dilution Range	WB 1:500-1:2000 IHC 1:100-1:300 IF 1:200-1:1000 ELISA 1:40000
Formulation	PBS, 50% Glycerol, 0.5% BSA and 0.02% Sodium Azide.
Isotype	IgG
Storage Instruction	Store at -20°C for up to 1 year from the date of receipt, and avoid repeat freeze-thaw cycles.

TARGET INFORMATION

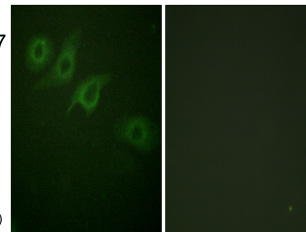
Gene ID	3459
Gene Symbol	IFNGR1
Uniprot ID	INGR1_HUMAN
Immunogen	The antiserum was produced against synthesized peptide derived from human Interferon-gamma Receptor alpha chain at amino acid range 431-480
Immunogen Region	400-480
Specificity	IFNGR1 polyclonal antibody (Interferon Gamma Receptor 1) binds to endogenous Interferon Gamma Receptor 1 at the amino acid region 400-480.
Immunogen Sequence	



Immunohistochemistry analysis of paraffin-embedded human brain tissue, using Interferon-gamma Receptor alpha chain Antibody. The picture on the right is blocked with the synthesized peptide.



Western blot analysis of lysates from COS7 cells, using Interferon-gamma Receptor alpha chain Antibody. The lane on the right is blocked with the synthesized peptide.



Immunofluorescence analysis of HepG2 cells, using Interferon-gamma Receptor alpha chain Antibody. The picture on the right is blocked with the synthesized peptide.