

Anti-IFNG antibody (Internal) (STJ93644)

STJ93644

GENERAL INFORMATION

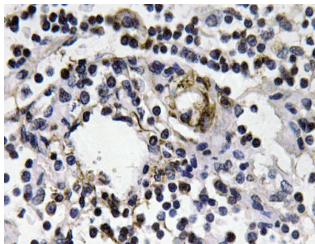
Product Type	Primary antibodies
Short Description	Rabbit polyclonal antibody anti-Interferon Gamma (Internal) is suitable for use in Western Blot, Immunohistochemistry, Immunofluorescence and ELISA research applications.
Applications	WB, IHC-P, IF-P, ELISA
Host/Source	Rabbit
Reactivity	Human, Rat, Mouse

PRODUCT PROPERTIES

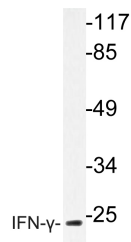
Clonality	Polyclonal
Clone ID	
Concentration	1 mg/mL
Conjugation	Unconjugated
Purification	The antibody was affinity-purified from rabbit anti-serum by affinity-chromatography.
Dilution Range	WB 1:500-1:2000 IHC 1:100-1:300 ELISA 1:40000
Formulation	PBS, 50% Glycerol, 0.5% BSA and 0.02% Sodium Azide.
Isotype	IgG
Storage Instruction	Store at -20°C for up to 1 year from the date of receipt, and avoid repeat freeze-thaw cycles.

TARGET INFORMATION

Gene ID	3458
Gene Symbol	IFNG
Uniprot ID	IFNG_HUMAN
Immunogen	The antiserum was produced against synthesized peptide derived from human IFN-gamma at amino acid range 20-69
Immunogen Region	Internal
Specificity	IFNG polyclonal antibody (Interferon Gamma) binds to endogenous Interferon Gamma at the amino acid region Internal.
Immunogen Sequence	



Immunohistochemistry analysis of IFN-Gamma antibody in paraffin-embedded human lymph node tissue.



Western blot analysis of lysate from HepG2 cells, using IFN-Gamma antibody.



Western blot analysis of various cells using IFN-Gamma Polyclonal Antibody diluted at 1: 1000