

Anti-IFNAR1 antibody (410-490) (STJ93643)

STJ93643

GENERAL INFORMATION

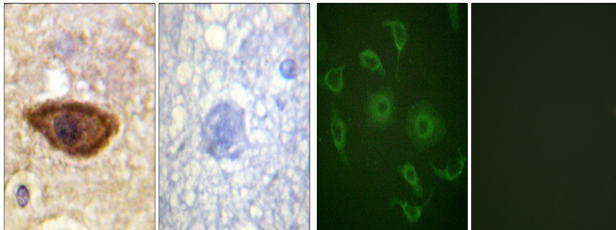
| | |
|--------------------------|--------------------------------------------------------------------------------------------------------------------------------------------------------------------------------------------------|
| Product Type | Primary antibodies |
| Short Description | Rabbit polyclonal antibody anti-Interferon Alpha/Beta Receptor 1 (410-490) is suitable for use in Immunohistochemistry, Immunofluorescence, Immunocytochemistry and ELISA research applications. |
| Applications | IHC-P, IF, ICC, ELISA |
| Host/Source | Rabbit |
| Reactivity | Human, Rat, Mouse |

PRODUCT PROPERTIES

| | |
|----------------------------|------------------------------------------------------------------------------------------------|
| Clonality | Polyclonal |
| Clone ID | |
| Concentration | 1 mg/mL |
| Conjugation | Unconjugated |
| Purification | The antibody was affinity-purified from rabbit anti-serum by affinity-chromatography. |
| Dilution | WB 1:500-2000 |
| Range | IHC 1:100-1:300 IF 1:200-1:1000 ELISA 1:20000 |
| Formulation | PBS, 50% Glycerol, 0.5% BSA and 0.02% Sodium Azide. |
| Isotype | IgG |
| Storage Instruction | Store at -20°C for up to 1 year from the date of receipt, and avoid repeat freeze-thaw cycles. |

TARGET INFORMATION

| | |
|---------------------------|------------------------------------------------------------------------------------------------------------------------------------------------------|
| Gene ID | 3454 |
| Gene Symbol | IFNAR1 |
| Uniprot ID | INAR1_HUMAN |
| Immunogen | The antiserum was produced against synthesized peptide derived from human Interferon-alpha/beta Receptor alpha chain at amino acid range 436-485 |
| Immunogen Region | 410-490 |
| Specificity | IFNAR1 polyclonal antibody (Interferon Alpha/Beta Receptor 1) binds to endogenous Interferon Alpha/Beta Receptor 1 at the amino acid region 410-490. |
| Immunogen Sequence | |



Immunohistochemistry analysis of paraffin-embedded human brain tissue, using Interferon-alpha/beta Receptor alpha chain Antibody. The picture on the right is blocked with the synthesized peptide.

Immunofluorescence analysis of HepG2 cells, using Interferon-alpha/beta Receptor alpha chain Antibody. The picture on the right is blocked with the synthesized peptide.

This product is suitable for in-vitro studies under the RESEARCH USE ONLY [RUO] licence. This product must not be used as for diagnostic or other medical purposes.
St John's Laboratory Ltd, Knowledge Dock Business Centre, University Way, London, E16 2RD | Tel: 0208 223 3081