

## Anti-ICAM1 antibody (450-530) (STJ93634)

STJ93634

### GENERAL INFORMATION

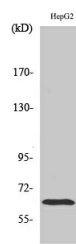
|                          |  |
|--------------------------|--|
| <b>Product Type</b>      | Primary antibodies   |
| <b>Short Description</b> | Rabbit polyclonal antibody anti-Intercellular Adhesion Molecule 1 (450-530) is suitable for use in Western Blot, Immunohistochemistry, Immunofluorescence and ELISA research applications. |
| <b>Applications</b>      | WB, IHC-P, IF-P, ELISA   |
| <b>Host/Source</b>       | Rabbit   |
| <b>Reactivity</b>        | Human, Rat, Mouse  |

### PRODUCT PROPERTIES

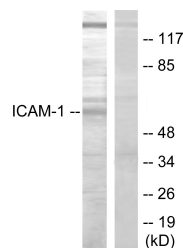
|                            |  |
|----------------------------|--|
| <b>Clonality</b>           | Polyclonal   |
| <b>Clone ID</b>            |  |
| <b>Concentration</b>       | 1 mg/mL  |
| <b>Conjugation</b>         | Unconjugated   |
| <b>Purification</b>        | The antibody was affinity-purified from rabbit anti-serum by affinity-chromatography.          |
| <b>Dilution Range</b>      | WB 1:500-1:2000<br>ELISA 1:10000   |
| <b>Formulation</b>         | PBS, 50% Glycerol, 0.5% BSA and 0.02% Sodium Azide.  |
| <b>Isotype</b>             | IgG  |
| <b>Storage Instruction</b> | Store at -20°C for up to 1 year from the date of receipt, and avoid repeat freeze-thaw cycles. |

### TARGET INFORMATION

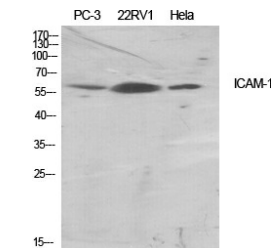
|                           |   |
|---------------------------|---|
| <b>Gene ID</b>            | 3383  |
| <b>Gene Symbol</b>        | ICAM1   |
| <b>Uniprot ID</b>         | ICAM1_HUMAN   |
| <b>Immunogen</b>          | The antiserum was produced against synthesized peptide derived from human ICAM-1 at amino acid range 479-528  |
| <b>Immunogen Region</b>   | 450-530   |
| <b>Specificity</b>        | ICAM1 polyclonal antibody (Intercellular Adhesion Molecule 1) binds to endogenous Intercellular Adhesion Molecule 1 at the amino acid region 450-530. |
| <b>Immunogen Sequence</b> |   |



Western blot analysis of HepG2 cells using ICAM-1 Polyclonal Antibody diluted at 1: 500



Western blot analysis of lysates from HepG2 cells, using ICAM-1 Antibody. The lane on the right is blocked with the synthesized peptide.



Western blot analysis of various cells using ICAM-1 Polyclonal Antibody diluted at 1: 500

This product is suitable for in-vitro studies under the RESEARCH USE ONLY [RUO] licence. This product must not be used as for diagnostic or other medical purposes.  
St John's Laboratory Ltd, Knowledge Dock Business Centre, University Way, London, E16 2RD | Tel: 0208 223 3081