

## Anti-IARS2 antibody (40-120 N-Term) (STJ93632)

STJ93632

### GENERAL INFORMATION

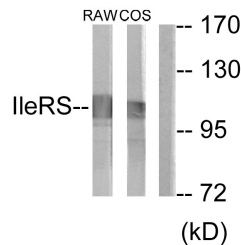
<b>Product Type</b>	Primary antibodies
<b>Short Description</b>	Rabbit polyclonal antibody anti-Isoleucine--Trna Ligase-Mitochondrial (40-120 N-Term) is suitable for use in Western Blot, Immunohistochemistry, Immunofluorescence, Immunocytochemistry and ELISA research applications.
<b>Applications</b>	WB, IHC-P, IF, ICC, ELISA
<b>Host/Source</b>	Rabbit
<b>Reactivity</b>	Human, Mouse, Monkey

### PRODUCT PROPERTIES

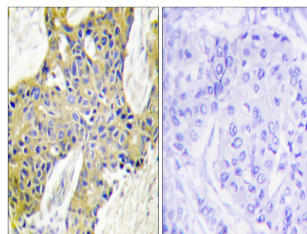
<b>Clonality</b>	Polyclonal
<b>Clone ID</b>	
<b>Concentration</b>	1 mg/mL
<b>Conjugation</b>	Unconjugated
<b>Purification</b>	The antibody was affinity-purified from rabbit anti-serum by affinity-chromatography.
<b>Dilution Range</b>	WB 1:500-1:2000 IHC 1:100-1:300 IF 1:200-1:1000 ELISA 1:20000
<b>Formulation</b>	PBS, 50% Glycerol, 0.5% BSA and 0.02% Sodium Azide.
<b>Isotype</b>	IgG
<b>Storage Instruction</b>	Store at -20°C for up to 1 year from the date of receipt, and avoid repeat freeze-thaw cycles.

### TARGET INFORMATION

<b>Gene ID</b>	55699
<b>Gene Symbol</b>	IARS2
<b>Uniprot ID</b>	SYIM_HUMAN
<b>Immunogen</b>	The antiserum was produced against synthesized peptide derived from human IARS2 at amino acid range 71-120
<b>Immunogen Region</b>	40-120 N-Term
<b>Specificity</b>	IARS2 polyclonal antibody (Isoleucine--Trna Ligase-Mitochondrial) binds to endogenous Isoleucine--Trna Ligase-Mitochondrial at the amino acid region 40-120 N-Term.
<b>Immunogen Sequence</b>	



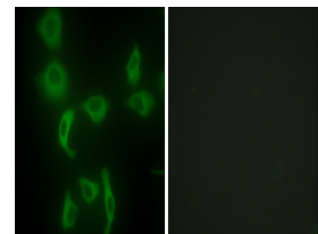
Western blot analysis of lysates from RAW264.7 and COS7 cells, using IARS2 Antibody. The lane on the right is blocked with the synthesized peptide.



Immunohistochemistry analysis of paraffin-embedded human breast carcinoma tissue, using IARS2 Antibody. The picture on the right is blocked with the synthesized peptide.



Western blot analysis of NIH-3T3 cells using IARS2 Polyclonal Antibody diluted at 1: 2000



Immunofluorescence analysis of HepG2 cells, using IARS2 Antibody. The picture on the right is blocked with the synthesized peptide.

This product is suitable for in-vitro studies under the RESEARCH USE ONLY [RUO] licence. This product must not be used as for diagnostic or other medical purposes.  
St John's Laboratory Ltd, Knowledge Dock Business Centre, University Way, London, E16 2RD | Tel: 0208 223 3081