

Anti-HSPBAP1 antibody (300-380 Internal) (STJ93623)

STJ93623

GENERAL INFORMATION

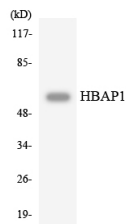
Product Type	Primary antibodies
Short Description	Rabbit polyclonal antibody anti-Hspb1-Associated Protein 1 (300-380 Internal) is suitable for use in Western Blot and ELISA research applications.
Applications	WB, ELISA
Host/Source	Rabbit
Reactivity	Human, Rat, Mouse

PRODUCT PROPERTIES

Clonality	Polyclonal
Clone ID	
Concentration	1 mg/mL
Conjugation	Unconjugated
Purification	The antibody was affinity-purified from rabbit anti-serum by affinity-chromatography.
Dilution Range	WB 1:500-1:2000 ELISA 1:5000
Formulation	PBS, 50% Glycerol, 0.5% BSA and 0.02% Sodium Azide.
Isotype	IgG
Storage	Store at -20°C for up to 1 year from the date of receipt, and avoid repeat freeze-thaw cycles.
Instruction	

TARGET INFORMATION

Gene ID	79663
Gene Symbol	HSPBAP1
Uniprot ID	HBAP1_HUMAN
Immunogen	The antiserum was produced against synthesized peptide derived from human HBAP1 at amino acid range 324-373
Immunogen Region	300-380 Internal
Specificity	HSPBAP1 polyclonal antibody (Hspb1-Associated Protein 1) binds to endogenous Hspb1-Associated Protein 1 at the amino acid region 300-380 Internal.
Immunogen Sequence	



Western blot analysis of the lysates from HepG2 cells using HBAP1 antibody.

This product is suitable for in-vitro studies under the RESEARCH USE ONLY [RUO] licence. This product must not be used as for diagnostic or other medical purposes.
St John's Laboratory Ltd, Knowledge Dock Business Centre, University Way, London, E16 2RD | Tel: 0208 223 3081