

Anti-HSPB6 antibody (1-80) (STJ93615)

STJ93615

GENERAL INFORMATION

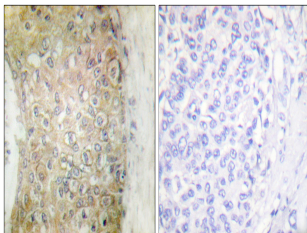
Product Type	Primary antibodies
Short Description	Rabbit polyclonal antibody anti-Heat Shock Protein Beta-6 (1-80) is suitable for use in Immunohistochemistry, Immunofluorescence and ELISA research applications.
Applications	IHC-P, IF-P, ELISA
Host/Source	Rabbit
Reactivity	Human, Mouse, Rat

PRODUCT PROPERTIES

Clonality	Polyclonal
Clone ID	
Concentration	1 mg/mL
Conjugation	Unconjugated
Purification	The antibody was affinity-purified from rabbit anti-serum by affinity-chromatography.
Dilution Range	IHC 1:100-1:300 ELISA 1:5000
Formulation	PBS, 50% Glycerol, 0.5% BSA and 0.02% Sodium Azide.
Isotype	IgG
Storage Instruction	Store at -20°C for up to 1 year from the date of receipt, and avoid repeat freeze-thaw cycles.

TARGET INFORMATION

Gene ID	126393
Gene Symbol	HSPB6
Uniprot ID	HSPB6_HUMAN
Immunogen	The antiserum was produced against synthesized peptide derived from human HSP20 at amino acid range 5-54
Immunogen Region	1-80
Specificity	HSPB6 polyclonal antibody (Heat Shock Protein Beta-6) binds to endogenous Heat Shock Protein Beta-6 at the amino acid region 1-80.
Immunogen Sequence	



Immunohistochemistry analysis of paraffin-embedded human breast carcinoma tissue, using HSP20 Antibody. The picture on the right is blocked with the synthesized peptide.