

Anti-HSP90AB1 antibody (180-260) (STJ93608)

STJ93608

GENERAL INFORMATION

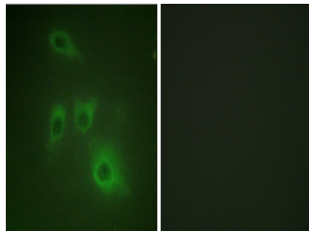
Product Type	Primary antibodies
Short Description	Rabbit polyclonal antibody anti-Heat Shock Protein Hsp 90-Beta (180-260) is suitable for use in Western Blot, Immunohistochemistry, Immunofluorescence, Immunocytochemistry and ELISA research applications.
Applications	WB, IHC-P, IF, ICC, ELISA
Host/Source	Rabbit
Reactivity	Human, Mouse, Rat

PRODUCT PROPERTIES

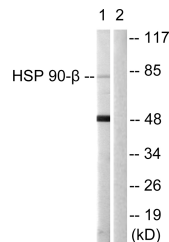
Clonality	Polyclonal
Clone ID	
Concentration	1 mg/mL
Conjugation	Unconjugated
Purification	The antibody was affinity-purified from rabbit anti-serum by affinity-chromatography.
Dilution	WB 1:500-1:2000
Range	IHC 1:100-1:300 IF 1:200-1:1000 ELISA 1:10000
Formulation	PBS, 50% Glycerol, 0.5% BSA and 0.02% Sodium Azide.
Isotype	IgG
Storage Instruction	Store at -20°C for up to 1 year from the date of receipt, and avoid repeat freeze-thaw cycles.

TARGET INFORMATION

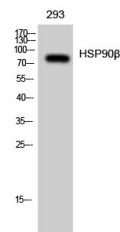
Gene ID	3326
Gene Symbol	HSP90AB1
Uniprot ID	HS90B_HUMAN
Immunogen	The antiserum was produced against synthesized peptide derived from human HSP90B at amino acid range 201-250
Immunogen Region	180-260
Specificity	HSP90AB1 polyclonal antibody (Heat Shock Protein Hsp 90-Beta) binds to endogenous Heat Shock Protein Hsp 90-Beta at the amino acid region 180-260.
Immunogen Sequence	



Immunofluorescence analysis of HUVEC cells, using HSP90B Antibody. The picture on the right is blocked with the synthesized peptide.



Western blot analysis of lysates from 293 cells, using HSP90B Antibody. The lane on the right is blocked with the synthesized peptide.



Western blot analysis of 293 cells using HSP90 Beta Polyclonal Antibody

This product is suitable for in-vitro studies under the RESEARCH USE ONLY [RUO] licence. This product must not be used as for diagnostic or other medical purposes.
St John's Laboratory Ltd, Knowledge Dock Business Centre, University Way, London, E16 2RD | Tel: 0208 223 3081