

## Anti-LIPE antibody (490-570) (STJ93605)

STJ93605

### GENERAL INFORMATION

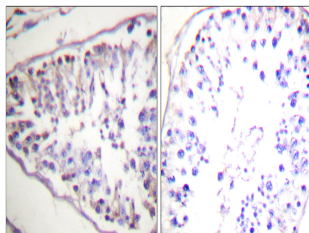
<b>Product Type</b>	Primary antibodies
<b>Short Description</b>	Rabbit polyclonal antibody anti-Hormone-Sensitive Lipase (490-570) is suitable for use in Western Blot, Immunohistochemistry, Immunofluorescence and ELISA research applications.
<b>Applications</b>	WB, IHC-P, IF-P, ELISA
<b>Host/Source</b>	Rabbit
<b>Reactivity</b>	Human, Mouse, Rat

### PRODUCT PROPERTIES

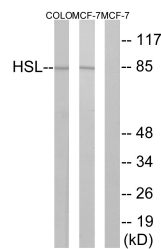
<b>Clonality</b>	Polyclonal
<b>Clone ID</b>	
<b>Concentration</b>	1 mg/mL
<b>Conjugation</b>	Unconjugated
<b>Purification</b>	The antibody was affinity-purified from rabbit anti-serum by affinity-chromatography.
<b>Dilution Range</b>	WB 1:500-1:2000 IHC 1:100-1:300 ELISA 1:5000
<b>Formulation</b>	PBS, 50% Glycerol, 0.5% BSA and 0.02% Sodium Azide.
<b>Isotype</b>	IgG
<b>Storage Instruction</b>	Store at -20°C for up to 1 year from the date of receipt, and avoid repeat freeze-thaw cycles.

### TARGET INFORMATION

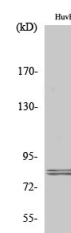
<b>Gene ID</b>	3991
<b>Gene Symbol</b>	LIPE
<b>Uniprot ID</b>	LIPS_HUMAN
<b>Immunogen</b>	The antiserum was produced against synthesized peptide derived from human HSL at amino acid range 518-567
<b>Immunogen Region</b>	490-570
<b>Specificity</b>	LIPE polyclonal antibody (Hormone-Sensitive Lipase) binds to endogenous Hormone-Sensitive Lipase at the amino acid region 490-570.
<b>Immunogen Sequence</b>	



Immunohistochemistry analysis of paraffin-embedded human tonsil tissue, using HSL Antibody. The picture on the right is blocked with the synthesized peptide.



Western blot analysis of lysates from COLO and MCF7 cells, using HSL Antibody. The lane on the right is blocked with the synthesized peptide.



Western blot analysis of various cells using HSL Polyclonal Antibody diluted at 1: 1000