

## Anti-HSF2 antibody (370-450 C-Term) (STJ93602)

STJ93602

### GENERAL INFORMATION

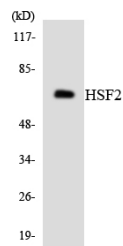
<b>Product Type</b>	Primary antibodies
<b>Short Description</b>	Rabbit polyclonal antibody anti-Heat Shock Factor Protein 2 (370-450 C-Term) is suitable for use in Western Blot, Immunohistochemistry, Immunofluorescence and ELISA research applications.
<b>Applications</b>	WB, IHC-P, IF-P, ELISA
<b>Host/Source</b>	Rabbit
<b>Reactivity</b>	Human, Mouse, Rat

### PRODUCT PROPERTIES

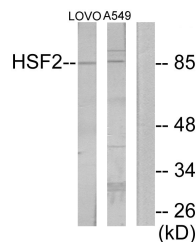
<b>Clonality</b>	Polyclonal
<b>Clone ID</b>	
<b>Concentration</b>	1 mg/mL
<b>Conjugation</b>	Unconjugated
<b>Purification</b>	The antibody was affinity-purified from rabbit anti-serum by affinity-chromatography.
<b>Dilution Range</b>	WB 1:500-1:2000 IHC 1:100-1:300 ELISA 1:20000
<b>Formulation</b>	PBS, 50% Glycerol, 0.5% BSA and 0.02% Sodium Azide.
<b>Isotype</b>	IgG
<b>Storage Instruction</b>	Store at -20°C for up to 1 year from the date of receipt, and avoid repeat freeze-thaw cycles.

### TARGET INFORMATION

<b>Gene ID</b>	3298
<b>Gene Symbol</b>	HSF2
<b>Uniprot ID</b>	HSF2_HUMAN
<b>Immunogen</b>	The antiserum was produced against synthesized peptide derived from human HSF2 at amino acid range 401-450
<b>Immunogen Region</b>	370-450 C-Term
<b>Specificity</b>	HSF2 polyclonal antibody (Heat Shock Factor Protein 2) binds to endogenous Heat Shock Factor Protein 2 at the amino acid region 370-450 C-Term.
<b>Immunogen Sequence</b>	



Western blot analysis of the lysates from HeLa cells using HSF2 antibody.



Western blot analysis of lysates from LOVO and A549 cells, using HSF2 Antibody. The lane on the right is blocked with the synthesized peptide.

This product is suitable for in-vitro studies under the RESEARCH USE ONLY [RUO] licence. This product must not be used as for diagnostic or other medical purposes.  
St John's Laboratory Ltd, Knowledge Dock Business Centre, University Way, London, E16 2RD | Tel: 0208 223 3081