

Anti-HSF1 antibody (250-330) (STJ93600)

STJ93600

GENERAL INFORMATION

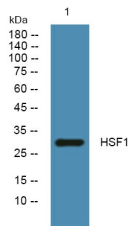
| | |
|--------------------------|--|
| Product Type | Primary antibodies |
| Short Description | Rabbit polyclonal antibody anti-Heat Shock Factor Protein 1 (250-330) is suitable for use in Western Blot and ELISA research applications. |
| Applications | WB, ELISA |
| Host/Source | Rabbit |
| Reactivity | Human, Rat, Mouse |

PRODUCT PROPERTIES

| | |
|----------------------------|--|
| Clonality | Polyclonal |
| Clone ID | |
| Concentration | 1 mg/mL |
| Conjugation | Unconjugated |
| Purification | The antibody was affinity-purified from rabbit anti-serum by affinity-chromatography. |
| Dilution Range | WB 1:500-1:2000 ELISA 1:5000 |
| Formulation | PBS, 50% Glycerol, 0.5% BSA and 0.02% Sodium Azide. |
| Isotype | IgG |
| Storage Instruction | Store at -20°C for up to 1 year from the date of receipt, and avoid repeat freeze-thaw cycles. |

TARGET INFORMATION

| | |
|---------------------------|--|
| Gene ID | 3297 |
| Gene Symbol | HSF1 |
| Uniprot ID | HSF1_HUMAN |
| Immunogen | Synthesized peptide derived from HSF1. at amino acid range: 250-330 |
| Immunogen Region | 250-330 |
| Specificity | HSF1 polyclonal antibody (Heat Shock Factor Protein 1) binds to endogenous Heat Shock Factor Protein 1 at the amino acid region 250-330. |
| Immunogen Sequence | |



Western blot analysis of lysates from K562 cells. primary antibody was diluted at 1:1000, 4°C over night