

Anti-HEY2 antibody (40-120 Internal) (STJ93595)

STJ93595

GENERAL INFORMATION

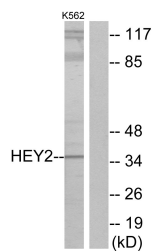
Product Type	Primary antibodies
Short Description	Rabbit polyclonal antibody anti-Hairy/Enhancer-Of-Split Related With Yrpw Motif Protein 2 (40-120 Internal) is suitable for use in Western Blot, Immunohistochemistry, Immunofluorescence and ELISA research applications.
Applications	WB, IHC-P, IF-P, ELISA
Host/Source	Rabbit
Reactivity	Human, Mouse

PRODUCT PROPERTIES

Clonality	Polyclonal
Clone ID	
Concentration	1 mg/mL
Conjugation	Unconjugated
Purification	The antibody was affinity-purified from rabbit anti-serum by affinity-chromatography.
Dilution Range	WB 1:500-1:2000 IHC 1:100-1:300 ELISA 1:10000
Formulation	PBS, 50% Glycerol, 0.5% BSA and 0.02% Sodium Azide.
Isotype	IgG
Storage Instruction	Store at 20°C for up to 1 year from the date of receipt, and avoid repeat freeze-thaw cycles.

TARGET INFORMATION

Gene ID	23493
Gene Symbol	HEY2
Uniprot ID	HEY2_HUMAN
Immunogen Region	The antiserum was produced against synthesized peptide derived from human HEY2 at amino acid range 21-70 40-120 Internal
Specificity	HEY2 polyclonal antibody (Hairy/Enhancer-Of-Split Related With Yrpw Motif Protein 2) binds to endogenous Hairy/Enhancer-Of-Split Related With Yrpw Motif Protein 2 at the amino acid region 40-120 Internal.
Immunogen Sequence	



Western blot analysis of lysates from K562 cells, using HEY2 Antibody. The lane on the right is blocked with the synthesized peptide.