

## Anti-HOXA6 antibody (70-150 Internal) (STJ93577)

STJ93577

### GENERAL INFORMATION

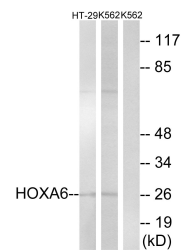
<b>Product Type</b>	Primary antibodies
<b>Short Description</b>	Rabbit polyclonal antibody anti-Homeobox Protein Hox-A6 (70-150 Internal) is suitable for use in Western Blot and ELISA research applications.
<b>Applications</b>	WB, ELISA
<b>Host/Source</b>	Rabbit
<b>Reactivity</b>	Human, Rat, Mouse

### PRODUCT PROPERTIES

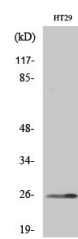
<b>Clonality</b>	Polyclonal
<b>Clone ID</b>	
<b>Concentration</b>	1 mg/mL
<b>Conjugation</b>	Unconjugated
<b>Purification</b>	The antibody was affinity-purified from rabbit anti-serum by affinity-chromatography.
<b>Dilution Range</b>	WB 1:500-1:2000 ELISA 1:40000
<b>Formulation</b>	PBS, 50% Glycerol, 0.5% BSA and 0.02% Sodium Azide.
<b>Isotype</b>	IgG
<b>Storage</b>	Store at -20°C for up to 1 year from the date of receipt, and avoid repeat freeze-thaw cycles.
<b>Instruction</b>	

### TARGET INFORMATION

<b>Gene ID</b>	3203
<b>Gene Symbol</b>	HOXA6
<b>Uniprot ID</b>	HXA6_HUMAN
<b>Immunogen</b>	The antiserum was produced against synthesized peptide derived from human HOXA6 at amino acid range 101-150
<b>Immunogen Region</b>	70-150 Internal
<b>Specificity</b>	HOXA6 polyclonal antibody (Homeobox Protein Hox-A6) binds to endogenous Homeobox Protein Hox-A6 at the amino acid region 70-150 Internal.
<b>Immunogen Sequence</b>	



Western blot analysis of lysates from HT-29 and K562 cells, using HOXA6 Antibody. The lane on the right is blocked with the synthesized peptide.



Western blot analysis of various cells using HoxA6 Polyclonal Antibody diluted at 1: 1000 cells nucleus extracted by Minute TM Cytoplasmic and Nuclear Fractionation kit (SC-003, Inventibiotech, MN, USA).

This product is suitable for in-vitro studies under the RESEARCH USE ONLY [RUO] licence. This product must not be used as for diagnostic or other medical purposes.  
St John's Laboratory Ltd, Knowledge Dock Business Centre, University Way, London, E16 2RD | Tel: 0208 223 3081