

Anti-Hox-A1/B1/D1 antibody (190-270 C-Term) (STJ93574)

STJ93574

GENERAL INFORMATION

Product Type	Primary antibodies
Short Description	Rabbit polyclonal antibody anti-Homeobox protein Hox-B1 and Homeobox protein Hox-A1 and Homeobox protein Hox-D1 (190-270 C-Term) is suitable for use in Immunohistochemistry, Immunofluorescence and ELISA research applications.
Applications	IHC-P, IF-P, ELISA
Host/Source	Rabbit
Reactivity	Human, Mouse

PRODUCT PROPERTIES

Clonality	Polyclonal
Clone ID	
Concentration	1 mg/mL
Conjugation	Unconjugated
Purification	The antibody was affinity-purified from rabbit anti-serum by affinity-chromatography.
Dilution	IHC 1:100-1:300
Range	ELISA 1:10000
Formulation	PBS, 50% Glycerol, 0.5% BSA and 0.02% Sodium Azide.
Isotype	IgG
Storage	Store at-20°C for up to 1 year from the date of receipt, and avoid repeat freeze-thaw cycles.
Instruction	

TARGET INFORMATION

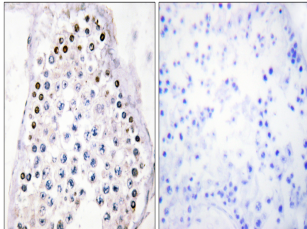
Gene ID [3211](#)
[3198](#)
[3231](#)
[HOXB1](#)
[HOXA1](#)
[HXB1_HUMAN](#)
[HXA1_HUMAN](#)
[HXD1_HUMAN](#)

<

Immunogen The antiserum was produced against synthesized peptide derived from human HOXA1/B1/D1 at amino acid range 216-265
Immunogen Region 190-270 C-Term

Specificity Hox-A1/B1/D1 polyclonal antibody (Homeobox protein Hox-B1 and Homeobox protein Hox-A1 and Homeobox protein Hox-D1) binds to endogenous Homeobox protein Hox-B1 and Homeobox protein Hox-A1 and Homeobox protein Hox-D1 at the amino acid region 190-270 C-

Immunogen Sequence



Immunohistochemistry analysis of paraffin-embedded human testis tissue, using HOXA1/B1/D1 Antibody. The picture on the right is blocked with the synthesized peptide.