

Anti-HOXA1 antibody (140-220 Internal) (STJ93573)

STJ93573

GENERAL INFORMATION

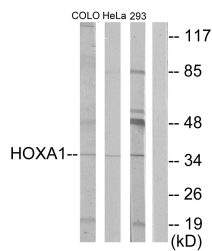
Product Type	Primary antibodies
Short Description	Rabbit polyclonal antibody anti-Homeobox Protein Hox-A1 (140-220 Internal) is suitable for use in Western Blot, Immunohistochemistry, Immunofluorescence and ELISA research applications.
Applications	WB, IHC-P, IF-P, ELISA
Host/Source	Rabbit
Reactivity	Human, Mouse, Rat

PRODUCT PROPERTIES

Clonality	Polyclonal
Clone ID	
Concentration	1 mg/mL
Conjugation	Unconjugated
Purification	The antibody was affinity-purified from rabbit anti-serum by affinity-chromatography.
Dilution Range	WB 1:500-1:2000 IHC 1:100-1:300 ELISA 1:20000
Formulation	PBS, 50% Glycerol, 0.5% BSA and 0.02% Sodium Azide.
Isotype	IgG
Storage Instruction	Store at -20°C for up to 1 year from the date of receipt, and avoid repeat freeze-thaw cycles.

TARGET INFORMATION

Gene ID	3198
Gene Symbol	HOXA1
Uniprot ID	HXA1_HUMAN
Immunogen	The antiserum was produced against synthesized peptide derived from human HOXA1 at amino acid range 171-220
Immunogen Region	140-220 Internal
Specificity	HOXA1 polyclonal antibody (Homeobox Protein Hox-A1) binds to endogenous Homeobox Protein Hox-A1 at the amino acid region 140-220 Internal.
Immunogen Sequence	



Western blot analysis of lysates from HeLa, COLO, and 293 cells, using HOXA1 Antibody. The lane on the right is blocked with the synthesized peptide.