

Anti-HNRNPC antibody (210-290 C-Term) (STJ93560)

STJ93560

GENERAL INFORMATION

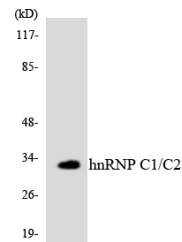
Product Type	Primary antibodies
Short Description	Rabbit polyclonal antibody anti-Heterogeneous Nuclear Ribonucleoproteins C1/C2 (210-290 C-Term) is suitable for use in Western Blot, Immunohistochemistry, Immunofluorescence, Immunocytochemistry and ELISA research applications.
Applications	WB, IHC-P, IF, ICC, ELISA
Host/Source	Rabbit
Reactivity	Human, Mouse, Rat

PRODUCT PROPERTIES

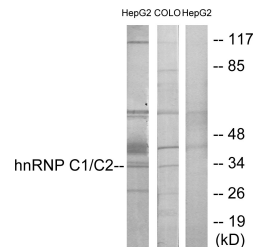
Clonality	Polyclonal
Clone ID	
Concentration	1 mg/mL
Conjugation	Unconjugated
Purification	The antibody was affinity-purified from rabbit anti-serum by affinity-chromatography.
Dilution Range	WB 1:500-1:2000 IHC 1:100-1:300 IF 1:200-1:1000 ELISA 1:20000
Formulation	PBS, 50% Glycerol, 0.5% BSA and 0.02% Sodium Azide.
Isotype	IgG
Storage Instruction	Store at -20°C for up to 1 year from the date of receipt, and avoid repeat freeze-thaw cycles.

TARGET INFORMATION

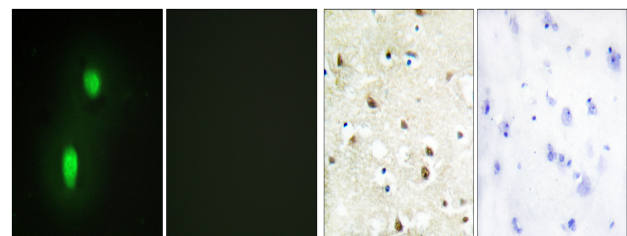
Gene ID	3183
Gene Symbol	HNRNPC
Uniprot ID	HNRNPC_HUMAN
Immunogen	The antiserum was produced against synthesized peptide derived from human hnRNP C1/C2 at amino acid range 241-290
Immunogen Region	210-290 C-Term
Specificity	HNRNPC polyclonal antibody (Heterogeneous Nuclear Ribonucleoproteins C1/C2) binds to endogenous Heterogeneous Nuclear Ribonucleoproteins C1/C2 at the amino acid region 210-290 C-Term.
Immunogen Sequence	



Western blot analysis of the lysates from HT-29 cells using hnRNP C1/C2 antibody.



Western blot analysis of lysates from HepG2 and COLO205 cells, using hnRNP C1/C2 Antibody. The lane on the right is blocked with the synthesized peptide.



Immunofluorescence analysis of HUVEC cells, using hnRNP C1/C2 Antibody. The picture on the right is blocked with the synthesized peptide.

Immunohistochemistry analysis of paraffin-embedded human brain tissue, using hnRNP C1/C2 Antibody. The picture on the right is blocked with the synthesized peptide.

This product is suitable for in-vitro studies under the RESEARCH USE ONLY [RUO] licence. This product must not be used as for diagnostic or other medical purposes.
St John's Laboratory Ltd, Knowledge Dock Business Centre, University Way, London, E16 2RD | Tel: 0208 223 3081