

Anti-CHST10 antibody (160-240 Internal) (STJ93556)

STJ93556

GENERAL INFORMATION

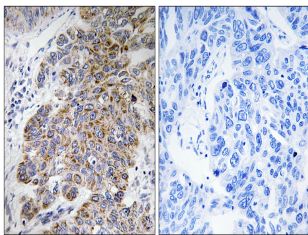
Product Type	Primary antibodies
Short Description	Rabbit polyclonal antibody anti-Carbohydrate Sulfotransferase 10 (160-240 Internal) is suitable for use in Western Blot, Immunohistochemistry, Immunofluorescence and ELISA research applications.
Applications	WB, IHC-P, IF-P, ELISA
Host/Source	Rabbit
Reactivity	Human, Mouse, Rat

PRODUCT PROPERTIES

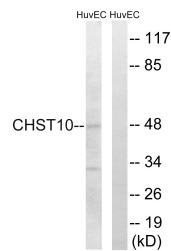
Clonality	Polyclonal
Clone ID	
Concentration	1 mg/mL
Conjugation	Unconjugated
Purification	The antibody was affinity-purified from rabbit anti-serum by affinity-chromatography.
Dilution Range	WB 1:500-1:2000 IHC 1:100-1:300 ELISA 1:40000
Formulation	PBS, 50% Glycerol, 0.5% BSA and 0.02% Sodium Azide.
Isotype	IgG
Storage Instruction	Store at -20°C for up to 1 year from the date of receipt, and avoid repeat freeze-thaw cycles.

TARGET INFORMATION

Gene ID	9486
Gene Symbol	CHST10
Uniprot ID	CHSTA_HUMAN
Immunogen	The antiserum was produced against synthesized peptide derived from human CHST10 at amino acid range 191-240
Immunogen Region	160-240 Internal
Specificity	CHST10 polyclonal antibody (Carbohydrate Sulfotransferase 10) binds to endogenous Carbohydrate Sulfotransferase 10 at the amino acid region 160-240 Internal.
Immunogen Sequence	



Immunohistochemistry analysis of paraffin-embedded human lung carcinoma tissue, using CHST10 Antibody. The picture on the right is blocked with the synthesized peptide.



Western blot analysis of lysates from HUVEC cells, using CHST10 Antibody. The lane on the right is blocked with the synthesized peptide.



Western blot analysis of various cells using HNK-1ST Polyclonal Antibody