

Anti-HMGB2 antibody (100-180 Internal) (STJ93552)

STJ93552

GENERAL INFORMATION

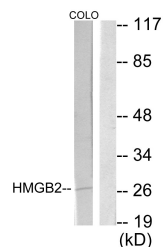
Product Type	Primary antibodies
Short Description	Rabbit polyclonal antibody anti-High Mobility Group Protein B2 (100-180 Internal) is suitable for use in Western Blot, Immunohistochemistry, Immunofluorescence, Immunocytochemistry and ELISA research applications.
Applications	WB, IHC-P, IF, ICC, ELISA
Host/Source	Rabbit
Reactivity	Human, Mouse, Rat

PRODUCT PROPERTIES

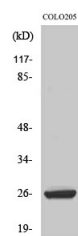
Clonality	Polyclonal
Clone ID	
Concentration	1 mg/mL
Conjugation	Unconjugated
Purification	The antibody was affinity-purified from rabbit anti-serum by affinity-chromatography.
Dilution Range	WB 1:500-1:2000 IHC 1:100-1:300 IF 1:200-1:1000 ELISA 1:10000
Formulation	PBS, 50% Glycerol, 0.5% BSA and 0.02% Sodium Azide.
Isotype	IgG
Storage Instruction	Store at -20°C for up to 1 year from the date of receipt, and avoid repeat freeze-thaw cycles.

TARGET INFORMATION

Gene ID	3148
Gene Symbol	HMGB2
Uniprot ID	HMGB2_HUMAN
Immunogen	The antiserum was produced against synthesized peptide derived from human HMGB2 at amino acid range 131-180
Immunogen Region	100-180 Internal
Specificity	HMGB2 polyclonal antibody (High Mobility Group Protein B2) binds to endogenous High Mobility Group Protein B2 at the amino acid region 100-180 Internal.
Immunogen Sequence	



Western blot analysis of lysates from COLO205 cells, using HMGB2 Antibody. The lane on the right is blocked with the synthesized peptide.



Western blot analysis of various cells using HMGB-2 Polyclonal Antibody

This product is suitable for in-vitro studies under the RESEARCH USE ONLY [RUO] licence. This product must not be used as for diagnostic or other medical purposes.
St John's Laboratory Ltd, Knowledge Dock Business Centre, University Way, London, E16 2RD | Tel: 0208 223 3081