

Anti-HLA-DOB antibody (10-90 N-Term) (STJ93543)

STJ93543

GENERAL INFORMATION

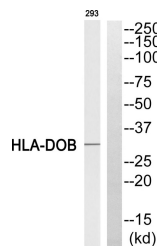
Product Type	Primary antibodies
Short Description	Rabbit polyclonal antibody anti-Hla Class II Histocompatibility antigen-Do Beta Chain (10-90 N-Term) is suitable for use in Western Blot and ELISA research applications.
Applications	WB, ELISA
Host/Source	Rabbit
Reactivity	Human

PRODUCT PROPERTIES

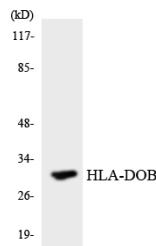
Clonality	Polyclonal
Clone ID	
Concentration	1 mg/mL
Conjugation	Unconjugated
Purification	The antibody was affinity-purified from rabbit anti-serum by affinity-chromatography.
Dilution	WB 1:500-1:2000
Range	ELISA 1:40000
Formulation	PBS, 50% Glycerol, 0.5% BSA and 0.02% Sodium Azide.
Isotype	IgG
Storage	Store at -20°C for up to 1 year from the date of receipt, and avoid repeat freeze-thaw cycles.
Instruction	

TARGET INFORMATION

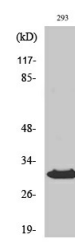
Gene ID	3112
Gene Symbol	HLA-DOB
Uniprot ID	DOB_HUMAN
Immunogen	The antiserum was produced against synthesized peptide derived from human HLA-DOB at amino acid range 1-50
Immunogen Region	10-90 N-Term
Specificity	HLA-DOB polyclonal antibody (Hla Class II Histocompatibility Antigen-Do Beta Chain) binds to endogenous Hla Class II Histocompatibility Antigen-Do Beta Chain at the amino acid region 10-90 N-Term.
Immunogen Sequence	



Western blot analysis of HLA-DOB Antibody. The lane on the right is blocked with the HLA-DOB peptide.



Western blot analysis of the lysates from HeLa cells using HLA-DOB antibody.



Western blot analysis of various cells using HLA-DOB Beta Polyclonal Antibody diluted at 1:1000

This product is suitable for in-vitro studies under the RESEARCH USE ONLY [RUO] licence. This product must not be used as for diagnostic or other medical purposes.
 St John's Laboratory Ltd, Knowledge Dock Business Centre, University Way, London, E16 2RD | Tel: 0208 223 3081