

Anti-HRH3 antibody (260-340 Internal) (STJ93507)

STJ93507

GENERAL INFORMATION

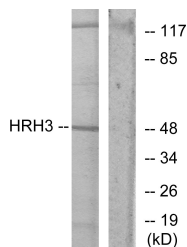
Product Type	Primary antibodies
Short Description	Rabbit polyclonal antibody anti-Histamine H3 Receptor (260-340 Internal) is suitable for use in Western Blot, Immunohistochemistry, Immunofluorescence, Immunocytochemistry and ELISA research applications.
Applications	WB, IHC-P, IF, ICC, ELISA
Host/Source	Rabbit
Reactivity	Human, Mouse, Rat

PRODUCT PROPERTIES

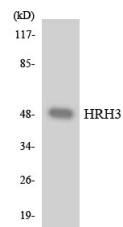
Clonality	Polyclonal
Clone ID	
Concentration	1 mg/mL
Conjugation	Unconjugated
Purification	The antibody was affinity-purified from rabbit anti-serum by affinity-chromatography.
Dilution Range	WB 1:500-1:2000 IHC 1:100-1:300 IF 1:200-1:1000 ELISA 1:5000
Formulation	PBS, 50% Glycerol, 0.5% BSA and 0.02% Sodium Azide.
Isotype	IgG
Storage Instruction	Store at -20°C for up to 1 year from the date of receipt, and avoid repeat freeze-thaw cycles.

TARGET INFORMATION

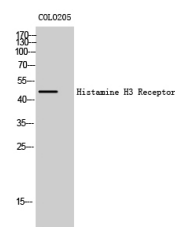
Gene ID	11255
Gene Symbol	HRH3
Uniprot ID	HRH3_HUMAN
Immunogen	The antiserum was produced against synthesized peptide derived from human HRH3 at amino acid range 291-340
Immunogen Region	260-340 Internal
Specificity	HRH3 polyclonal antibody (Histamine H3 Receptor) binds to endogenous Histamine H3 Receptor at the amino acid region 260-340 Internal.
Immunogen Sequence	



Western blot analysis of lysates from COLO205 cells, using HRH3 Antibody. The lane on the right is blocked with the synthesized peptide.



Western blot analysis of the lysates from RAW264.7 cells using HRH3 antibody.



Western blot analysis of COLO205 cells using Histamine H3 Receptor Polyclonal Antibody

This product is suitable for in-vitro studies under the RESEARCH USE ONLY [RUO] licence. This product must not be used as for diagnostic or other medical purposes.
St John's Laboratory Ltd, Knowledge Dock Business Centre, University Way, London, E16 2RD | Tel: 0208 223 3081