

Anti-HRH2 antibody (100-180 Internal) (STJ93506)

STJ93506

GENERAL INFORMATION

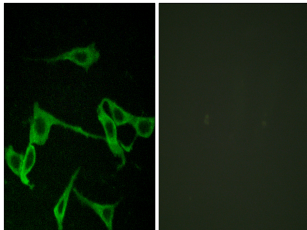
Product Type	Primary antibodies
Short Description	Rabbit polyclonal antibody anti-Histamine H2 Receptor (100-180 Internal) is suitable for use in Western Blot, Immunofluorescence, Immunocytochemistry and ELISA research applications.
Applications	WB, IF, ICC, ELISA
Host/Source	Rabbit
Reactivity	Human, Rat, Mouse

PRODUCT PROPERTIES

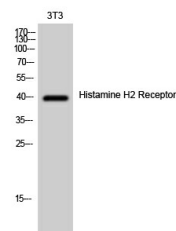
Clonality	Polyclonal
Clone ID	
Concentration	1 mg/mL
Conjugation	Unconjugated
Purification	The antibody was affinity-purified from rabbit anti-serum by affinity-chromatography.
Dilution Range	WB 1:500-1:2000 IF 1:200-1:1000 ELISA 1:5000
Formulation	PBS, 50% Glycerol, 0.5% BSA and 0.02% Sodium Azide.
Isotype	IgG
Storage Instruction	Store at -20°C for up to 1 year from the date of receipt, and avoid repeat freeze-thaw cycles.

TARGET INFORMATION

Gene ID	3274
Gene Symbol	HRH2
Uniprot ID	HRH2_HUMAN
Immunogen	The antiserum was produced against synthesized peptide derived from human HRH2 at amino acid range 131-180
Immunogen Region	100-180 Internal
Specificity	HRH2 polyclonal antibody (Histamine H2 Receptor) binds to endogenous Histamine H2 Receptor at the amino acid region 100-180 Internal.
Immunogen Sequence	



Immunofluorescence analysis of LOVO cells, using HRH2 Antibody. The picture on the right is blocked with the synthesized peptide.



Western blot analysis of 3T3 cells using Histamine H2 Receptor Polyclonal Antibody

This product is suitable for in-vitro studies under the RESEARCH USE ONLY [RUO] licence. This product must not be used as for diagnostic or other medical purposes.
St John's Laboratory Ltd, Knowledge Dock Business Centre, University Way, London, E16 2RD | Tel: 0208 223 3081