

Anti-HRH1 antibody (110-190 Internal) (STJ93505)

STJ93505

GENERAL INFORMATION

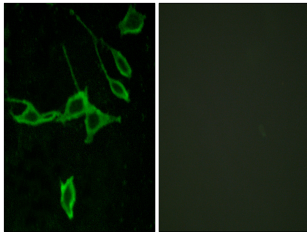
Product Type	Primary antibodies
Short Description	Rabbit polyclonal antibody anti-Histamine H1 Receptor (110-190 Internal) is suitable for use in Western Blot, Immunofluorescence, Immunocytochemistry and ELISA research applications.
Applications	WB, IF, ICC, ELISA
Host/Source	Rabbit
Reactivity	Human, Rat, Mouse

PRODUCT PROPERTIES

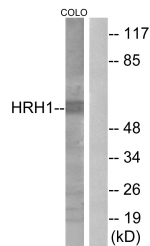
Clonality	Polyclonal
Clone ID	
Concentration	1 mg/mL
Conjugation	Unconjugated
Purification	The antibody was affinity-purified from rabbit anti-serum by affinity-chromatography.
Dilution Range	WB 1:500-1:2000 IF 1:200-1:1000 ELISA 1:10000
Formulation	PBS, 50% Glycerol, 0.5% BSA and 0.02% Sodium Azide.
Isotype	IgG
Storage Instruction	Store at -20°C for up to 1 year from the date of receipt, and avoid repeat freeze-thaw cycles.

TARGET INFORMATION

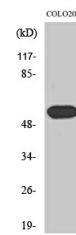
Gene ID	3269
Gene Symbol	HRH1
Uniprot ID	HRH1_HUMAN
Immunogen	The antiserum was produced against synthesized peptide derived from human HRH1 at amino acid range 141-190
Immunogen Region	110-190 Internal
Specificity	HRH1 polyclonal antibody (Histamine H1 Receptor) binds to endogenous Histamine H1 Receptor at the amino acid region 110-190 Internal.
Immunogen Sequence	



Immunofluorescence analysis of LOVO cells, using HRH1 Antibody. The picture on the right is blocked with the synthesized peptide.



Western blot analysis of lysates from COLO205 cells, using HRH1 Antibody. The lane on the right is blocked with the synthesized peptide.



Western blot analysis of various cells using Histamine H1 Receptor Polyclonal Antibody diluted at 1:2000

This product is suitable for in-vitro studies under the RESEARCH USE ONLY [RUO] licence. This product must not be used as for diagnostic or other medical purposes.
St John's Laboratory Ltd, Knowledge Dock Business Centre, University Way, London, E16 2RD | Tel: 0208 223 3081