

Anti-HARS1 antibody (430-510 C-Term) (STJ93504)

STJ93504

GENERAL INFORMATION

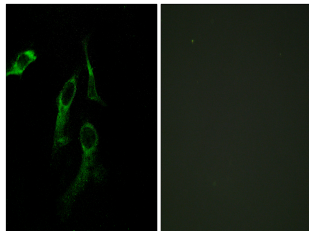
Product Type	Primary antibodies
Short Description	Rabbit polyclonal antibody anti-Histidine--Trna Ligase-Cytoplasmic (430-510 C-Term) is suitable for use in Western Blot, Immunohistochemistry, Immunofluorescence, Immunocytochemistry and ELISA research applications.
Applications	WB, IHC-P, IF, ICC, ELISA
Host/Source	Rabbit
Reactivity	Human, Mouse

PRODUCT PROPERTIES

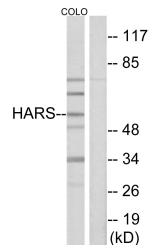
Clonality	Polyclonal
Clone ID	
Concentration	1 mg/mL
Conjugation	Unconjugated
Purification	The antibody was affinity-purified from rabbit anti-serum by affinity-chromatography.
Dilution Range	WB 1:500-1:2000 IHC 1:100-1:300 IF 1:200-1:1000 ELISA 1:20000
Formulation	PBS, 50% Glycerol, 0.5% BSA and 0.02% Sodium Azide.
Isotype	IgG
Storage Instruction	Store at -20°C for up to 1 year from the date of receipt, and avoid repeat freeze-thaw cycles.

TARGET INFORMATION

Gene ID	3035
Gene Symbol	HARS1
Uniprot ID	HARS1_HUMAN
Immunogen	The antiserum was produced against synthesized peptide derived from human HARS at amino acid range 460-509
Immunogen Region	430-510 C-Term
Specificity	HARS1 polyclonal antibody (Histidine--Trna Ligase--Cytoplasmic) binds to endogenous Histidine--Trna Ligase--Cytoplasmic at the amino acid region 430-510 C-Term.
Immunogen Sequence	



Immunofluorescence analysis of HepG2 and HeLa cells, using HARS Antibody. The picture on the right is blocked with the synthesized peptide.



Western blot analysis of lysates from COLO cells, using HARS Antibody. The lane on the right is blocked with the synthesized peptide.



Western blot analysis of various cells using HisRS Polyclonal Antibody diluted at 1: 2000

This product is suitable for in-vitro studies under the RESEARCH USE ONLY [RUO] licence. This product must not be used as for diagnostic or other medical purposes.
St John's Laboratory Ltd, Knowledge Dock Business Centre, University Way, London, E16 2RD | Tel: 0208 223 3081