

Anti-HIRA antibody (490-570) (STJ93503)

STJ93503

GENERAL INFORMATION

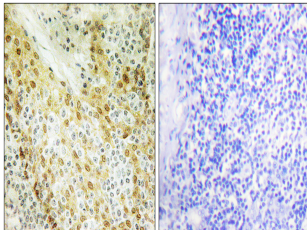
Product Type	Primary antibodies
Short Description	Rabbit polyclonal antibody anti-Protein Hira (490-570) is suitable for use in Immunohistochemistry, Immunofluorescence and ELISA research applications.
Applications	IHC-P, IF-P, ELISA
Host/Source	Rabbit
Reactivity	Human, Mouse

PRODUCT PROPERTIES

Clonality	Polyclonal
Clone ID	
Concentration	1 mg/mL
Conjugation	Unconjugated
Purification	The antibody was affinity-purified from rabbit anti-serum by affinity-chromatography.
Dilution Range	IHC 1:100-1:300 ELISA 1:10000
Formulation	PBS, 50% Glycerol, 0.5% BSA and 0.02% Sodium Azide.
Isotype	IgG
Storage	Store at -20°C for up to 1 year from the date of receipt, and avoid repeat freeze-thaw cycles.
Instruction	

TARGET INFORMATION

Gene ID	7290
Gene Symbol	HIRA
Uniprot ID	HIRA_HUMAN
Immunogen	The antiserum was produced against synthesized peptide derived from human HIRA at amino acid range 521-570
Immunogen Region	490-570
Specificity	HIRA polyclonal antibody (Protein Hira) binds to endogenous Protein Hira at the amino acid region 490-570.
Immunogen Sequence	



Immunohistochemistry analysis of paraffin-embedded human tonsil tissue, using HIRA Antibody. The picture on the right is blocked with the synthesized peptide.