

Anti-HIF1A antibody (Internal) (STJ93498)

STJ93498

GENERAL INFORMATION

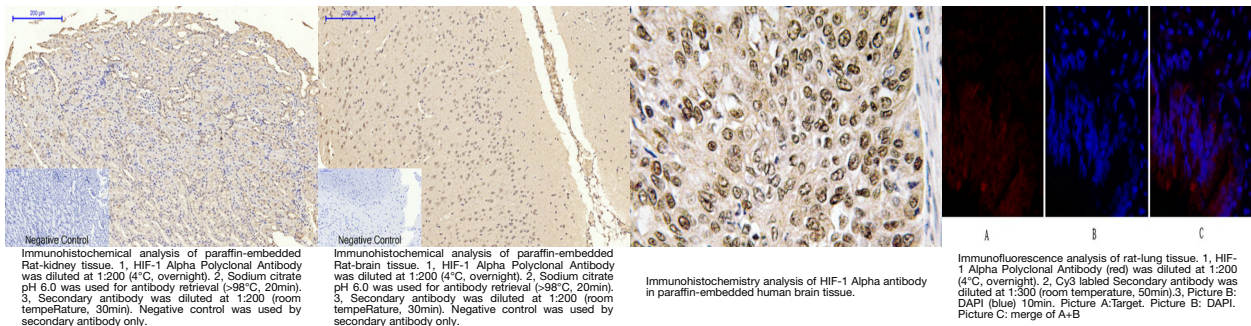
Product Type	Primary antibodies
Short Description	Rabbit polyclonal antibody anti-Hypoxia-Inducible Factor 1-Alpha (Internal) is suitable for use in Immunofluorescence, Immunocytochemistry, Western Blot, Immunohistochemistry, Immunoprecipitation and ELISA research applications.
Applications	IF, ICC, WB, IHC-P, IP, ELISA
Host/Source	Rabbit
Reactivity	Human, Mouse, Rat

PRODUCT PROPERTIES

Clonality	Polyclonal
Clone ID	
Concentration	1 mg/mL
Conjugation	Unconjugated
Purification	The antibody was affinity-purified from rabbit anti-serum by affinity-chromatography.
Dilution	IF 1:50-200
Range	WB 1:500-1:2000 IP 1:200 IHC 1:100-1:300 ELISA 1:40000
Formulation	PBS, 50% Glycerol, 0.5% BSA and 0.02% Sodium Azide.
Isotype	IgG
Storage	Store at -20°C for up to 1 year from the date of receipt, and avoid repeat freeze-thaw cycles.
Instruction	

TARGET INFORMATION

Gene ID	3091
Gene Symbol	HIF1A
Uniprot ID	HIF1A_HUMAN
Immunogen	The antiserum was produced against synthesized peptide derived from human HIF-1alpha at amino acid range 328-377
Immunogen Region	Internal
Specificity	HIF1A polyclonal antibody (Hypoxia-Inducible Factor 1-Alpha) binds to endogenous Hypoxia-Inducible Factor 1-Alpha at the amino acid region Internal.
Immunogen Sequence	



This product is suitable for in-vitro studies under the RESEARCH USE ONLY [RUO] licence. This product must not be used as for diagnostic or other medical purposes.
St John's Laboratory Ltd, Knowledge Dock Business Centre, University Way, London, E16 2RD | Tel: 0208 223 3081