

Anti-HIBADH antibody (250-330 C-Term) (STJ93496)

STJ93496

GENERAL INFORMATION

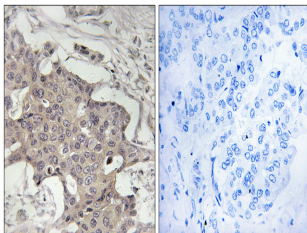
Product Type	Primary antibodies
Short Description	Rabbit polyclonal antibody anti-3-Hydroxyisobutyrate Dehydrogenase-Mitochondrial (250-330 C-Term) is suitable for use in Immunohistochemistry, Immunofluorescence and ELISA research applications.
Applications	IHC-P, IF-P, ELISA
Host/Source	Rabbit
Reactivity	Human, Mouse, Rat

PRODUCT PROPERTIES

Clonality	Polyclonal
Clone ID	
Concentration	1 mg/mL
Conjugation	Unconjugated
Purification	The antibody was affinity-purified from rabbit anti-serum by affinity-chromatography.
Dilution	IHC 1:100-1:300
Range	ELISA 1:10000
Formulation	PBS, 50% Glycerol, 0.5% BSA and 0.02% Sodium Azide.
Isotype	IgG
Storage	Store at -20°C for up to 1 year from the date of receipt, and avoid repeat freeze-thaw cycles.
Instruction	

TARGET INFORMATION

Gene ID	11112
Gene Symbol	HIBADH
Uniprot ID	3HIDH_HUMAN
Immunogen	The antiserum was produced against synthesized peptide derived from human HIBADH at amino acid range 281-330
Immunogen Region	250-330 C-Term
Specificity	HIBADH polyclonal antibody (3-Hydroxyisobutyrate Dehydrogenase-Mitochondrial) binds to endogenous 3-Hydroxyisobutyrate Dehydrogenase-Mitochondrial at the amino acid region 250-330 C-Term.
Immunogen Sequence	



Immunohistochemistry analysis of paraffin-embedded human breast carcinoma tissue, using HIBADH Antibody. The picture on the right is blocked with the synthesized peptide.