

## Anti-MAP4K4 antibody (380-460 Internal) (STJ93495)

STJ93495

### GENERAL INFORMATION

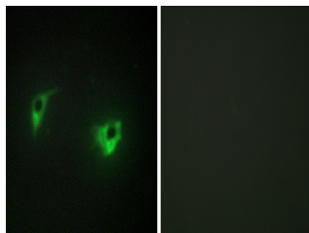
<b>Product Type</b>	Primary antibodies
<b>Short Description</b>	Rabbit polyclonal antibody anti-Mitogen-Activated Protein Kinase Kinase Kinase Kinase 4 (380-460 Internal) is suitable for use in Western Blot, Immunofluorescence, Immunocytochemistry and ELISA research applications.
<b>Applications</b>	WB, IF, ICC, ELISA
<b>Host/Source</b>	Rabbit
<b>Reactivity</b>	Human, Mouse

### PRODUCT PROPERTIES

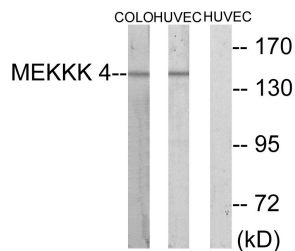
<b>Clonality</b>	Polyclonal
<b>Clone ID</b>	
<b>Concentration</b>	1 mg/mL
<b>Conjugation</b>	Unconjugated
<b>Purification</b>	The antibody was affinity-purified from rabbit anti-serum by affinity-chromatography.
<b>Dilution Range</b>	WB 1:500-1:2000 IF 1:200-1:1000 ELISA 1:40000
<b>Formulation</b>	PBS, 50% Glycerol, 0.5% BSA and 0.02% Sodium Azide.
<b>Isotype</b>	IgG
<b>Storage Instruction</b>	Store at -20°C for up to 1 year from the date of receipt, and avoid repeat freeze-thaw cycles.

### TARGET INFORMATION

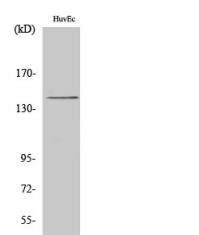
<b>Gene ID</b>	9448
<b>Gene Symbol</b>	MAP4K4
<b>Uniprot ID</b>	M4K4_HUMAN
<b>Immunogen</b>	The antiserum was produced against synthesized peptide derived from human MEKKK 4 at amino acid range 406-455
<b>Immunogen Region</b>	380-460 Internal
<b>Specificity</b>	MAP4K4 polyclonal antibody (Mitogen-Activated Protein Kinase Kinase Kinase Kinase 4) binds to endogenous Mitogen-Activated Protein Kinase Kinase Kinase Kinase 4 at the amino acid region 380-460 Internal.
<b>Immunogen Sequence</b>	



Immunofluorescence analysis of A549 cells, using MEKKK 4 Antibody. The picture on the right is blocked with the synthesized peptide.



Western blot analysis of lysates from HUVEC and COLO cells, using MEKKK 4 Antibody. The lane on the right is blocked with the synthesized peptide.



Western blot analysis of various cells using HGK Polyclonal Antibody

This product is suitable for in-vitro studies under the RESEARCH USE ONLY [RUO] licence. This product must not be used as for diagnostic or other medical purposes.  
St John's Laboratory Ltd, Knowledge Dock Business Centre, University Way, London, E16 2RD | Tel: 0208 223 3081