

Anti-HEXIM1 antibody (150-230 Internal) (STJ93494)

STJ93494

GENERAL INFORMATION

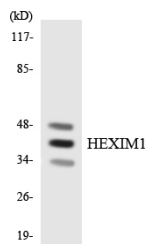
Product Type	Primary antibodies
Short Description	Rabbit polyclonal antibody anti-Protein Hexim1 (150-230 Internal) is suitable for use in Western Blot, Immunohistochemistry, Immunofluorescence, Immunocytochemistry and ELISA research applications.
Applications	WB, IHC-P, IF, ICC, ELISA
Host/Source	Rabbit
Reactivity	Human, Mouse, Rat

PRODUCT PROPERTIES

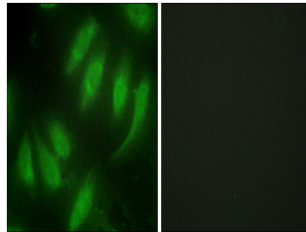
Clonality	Polyclonal
Clone ID	
Concentration	1 mg/mL
Conjugation	Unconjugated
Purification	The antibody was affinity-purified from rabbit anti-serum by affinity-chromatography.
Dilution Range	WB 1:500-1:2000 IHC 1:100-1:300 IF 1:200-1:1000 ELISA 1:10000
Formulation	PBS, 50% Glycerol, 0.5% BSA and 0.02% Sodium Azide.
Isotype	IgG
Storage Instruction	Store at -20°C for up to 1 year from the date of receipt, and avoid repeat freeze-thaw cycles.

TARGET INFORMATION

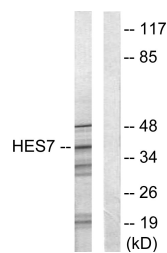
Gene ID	10614
Gene Symbol	HEXIM1
Uniprot ID	HEX11_HUMAN
Immunogen	The antiserum was produced against synthesized peptide derived from human HEXIM1 at amino acid range 181-230
Immunogen Region	150-230 Internal
Specificity	HEXIM1 polyclonal antibody (Protein Hexim1) binds to endogenous Protein Hexim1 at the amino acid region 150-230 Internal.
Immunogen Sequence	



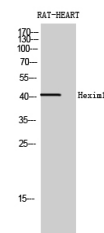
Western blot analysis of the lysates from HeLa cells using HEXIM1 antibody.



Immunofluorescence analysis of HeLa cells, using HEXIM1 Antibody. The picture on the right is blocked with the synthesized peptide.



Western blot analysis of lysates from NIH/3T3 cells, using HEXIM1 Antibody. The lane on the right is blocked with the synthesized peptide.



Western blot analysis of RAT-HEART cells using Hexim1 Polyclonal Antibody diluted at 1 : 2000

This product is suitable for in-vitro studies under the RESEARCH USE ONLY [RUO] licence. This product must not be used as for diagnostic or other medical purposes.
 St John's Laboratory Ltd, Knowledge Dock Business Centre, University Way, London, E16 2RD | Tel: 0208 223 3081