

Anti-HEN1/2 antibody (10-90 Internal) (STJ93490)

STJ93490

GENERAL INFORMATION

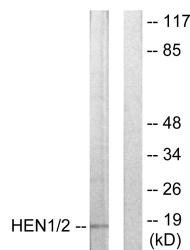
Product Type	Primary antibodies
Short Description	Rabbit polyclonal antibody anti-Helix-loop-helix protein 1 and Helix-loop-helix protein 2 (10-90 Internal) is suitable for use in Western Blot, Immunohistochemistry, Immunofluorescence and ELISA research applications.
Applications	WB, IHC-P, IF-P, ELISA
Host/Source	Rabbit
Reactivity	Human, Mouse

PRODUCT PROPERTIES

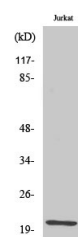
Clonality	Polyclonal
Clone ID	
Concentration	1 mg/mL
Conjugation	Unconjugated
Purification	The antibody was affinity-purified from rabbit anti-serum by affinity-chromatography.
Dilution Range	WB 1:500-1:2000 IHC 1:100-1:300 ELISA 1:10000
Formulation	PBS, 50% Glycerol, 0.5% BSA and 0.02% Sodium Azide.
Isotype	IgG
Storage Instruction	Store at -20°C for up to 1 year from the date of receipt, and avoid repeat freeze-thaw cycles.

TARGET INFORMATION

Gene ID	4807 4808
Gene Symbol	NHLH1 NHLH2
Uniprot ID	HEN1_HUMAN HEN2_HUMAN
Immunogen Region	The antiserum was produced against synthesized peptide derived from human HEN1/2 at amino acid range 41-90 10-90 Internal
Specificity	HEN1/2 polyclonal antibody (Helix-loop-helix protein 1 and Helix-loop-helix protein 2) binds to endogenous Helix-loop-helix protein 1 and Helix-loop-helix protein 2 at the amino acid region 10-90 Internal.
Immunogen Sequence	



Western blot analysis of lysates from Jurkat cells, using HEN1/2 Antibody. The lane on the right is blocked with the synthesized peptide.



Western blot analysis of various cells using HEN1/2 Polyclonal Antibody diluted at 1: 1000 cells nucleus extracted by Minute™ Cytoplasmic and Nuclear Fractionation kit (SC-003, Inventibiotec, MN, USA).

This product is suitable for in-vitro studies under the RESEARCH USE ONLY [RUO] licence. This product must not be used as for diagnostic or other medical purposes.
St John's Laboratory Ltd, Knowledge Dock Business Centre, University Way, London, E16 2RD | Tel: 0208 223 3081