

Anti-ELAVL2 antibody (30-110 N-Term) (STJ93489)

STJ93489

GENERAL INFORMATION

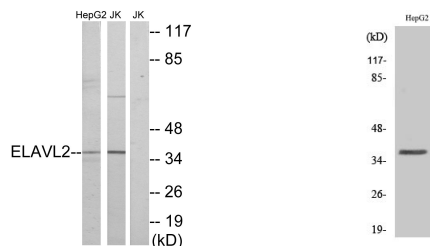
Product Type	Primary antibodies
Short Description	Rabbit polyclonal antibody anti-Elav-Like Protein 2 (30-110 N-Term) is suitable for use in Western Blot and ELISA research applications.
Applications	WB, ELISA
Host/Source	Rabbit
Reactivity	Human, Mouse, Rat

PRODUCT PROPERTIES

Clonality	Polyclonal
Clone ID	
Concentration	1 mg/mL
Conjugation	Unconjugated
Purification	The antibody was affinity-purified from rabbit anti-serum by affinity-chromatography.
Dilution Range	WB 1:500-1:2000 ELISA 1:20000
Formulation	PBS, 50% Glycerol, 0.5% BSA and 0.02% Sodium Azide.
Isotype	IgG
Storage Instruction	Store at -20°C for up to 1 year from the date of receipt, and avoid repeat freeze-thaw cycles.

TARGET INFORMATION

Gene ID	1993
Gene Symbol	ELAVL2
Uniprot ID	ELAV2_HUMAN
Immunogen	The antiserum was produced against synthesized peptide derived from human ELAVL2 at amino acid range 11-60
Immunogen Region	30-110 N-Term
Specificity	ELAVL2 polyclonal antibody (Elav-Like Protein 2) binds to endogenous Elav-Like Protein 2 at the amino acid region 30-110 N-Term.
Immunogen Sequence	



Western blot analysis of lysates from HepG2 and Jurkat cells, using ELAVL2 Antibody. The lane on the right is blocked with the synthesized peptide.

Western blot analysis of various cells using HeL-N1 Polyclonal Antibody

This product is suitable for in-vitro studies under the RESEARCH USE ONLY [RUO] licence. This product must not be used as for diagnostic or other medical purposes.
St John's Laboratory Ltd, Knowledge Dock Business Centre, University Way, London, E16 2RD | Tel: 0208 223 3081