

Anti-NDC80 antibody (320-400 Internal) (STJ93486)

STJ93486

GENERAL INFORMATION

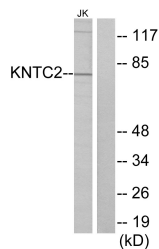
Product Type	Primary antibodies
Short Description	Rabbit polyclonal antibody anti-Kinetochore Protein Ndc80 Homolog (320-400 Internal) is suitable for use in Western Blot, Immunofluorescence, Immunocytochemistry and ELISA research applications.
Applications	WB, IF, ICC, ELISA
Host/Source	Rabbit
Reactivity	Human, Mouse

PRODUCT PROPERTIES

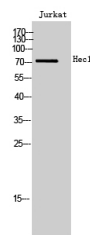
Clonality	Polyclonal
Clone ID	
Concentration	1 mg/mL
Conjugation	Unconjugated
Purification	The antibody was affinity-purified from rabbit anti-serum by affinity-chromatography.
Dilution Range	WB 1:500-1:2000 IF 1:200-1:1000 ELISA 1:20000
Formulation	PBS, 50% Glycerol, 0.5% BSA and 0.02% Sodium Azide.
Isotype	IgG
Storage Instruction	Store at -20°C for up to 1 year from the date of receipt, and avoid repeat freeze-thaw cycles.

TARGET INFORMATION

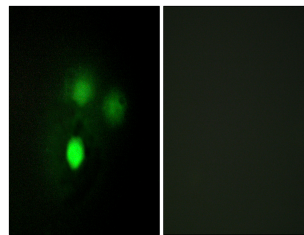
Gene ID	10403
Gene Symbol	NDC80
Uniprot ID	NDC80_HUMAN
Immunogen	The antiserum was produced against synthesized peptide derived from human KNTC2 at amino acid range 351-400
Immunogen Region	320-400 Internal
Specificity	NDC80 polyclonal antibody (Kinetochore Protein Ndc80 Homolog) binds to endogenous Kinetochore Protein Ndc80 Homolog at the amino acid region 320-400 Internal.
Immunogen Sequence	



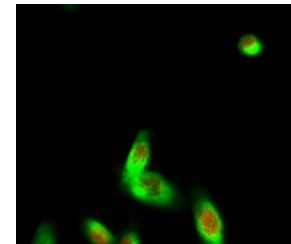
Western blot analysis of lysates from Jurkat cells, using KNTC2 Antibody. The lane on the right is blocked with the synthesized peptide.



Western blot analysis of Jurkat cells using Hec1 Polyclonal Antibody cells nucleus extracted by Minute TM Cytoplasmic and Nuclear Fractionation kit (SC-003, Inventiotech, MN, USA).



Immunofluorescence analysis of HUVEC cells, using KNTC2 Antibody. The picture on the right is blocked with the synthesized peptide.



Immunofluorescence analysis of HeLa cell. 1. Hec1 Polyclonal Antibody (red) was diluted at 1:200 (4°C overnight). Kif 7 monoclonal antibody (3F8) (green) was diluted at 1:200 (4°C overnight). 2. Goat Anti Rabbit Alexa Fluor 594 Catalog: (NA was diluted at 1:1000 (room temperature, 50min). Goat Anti Mouse Alexa Fluor 488 Catalog: (NA was diluted at 1:1000 (room temperature, 50min).

This product is suitable for in-vitro studies under the RESEARCH USE ONLY [RUO] licence. This product must not be used as for diagnostic or other medical purposes.
St John's Laboratory Ltd, Knowledge Dock Business Centre, University Way, London, E16 2RD | Tel: 0208 223 3081