

## Anti-HDAC5 antibody (440-520) (STJ93481)

STJ93481

### GENERAL INFORMATION

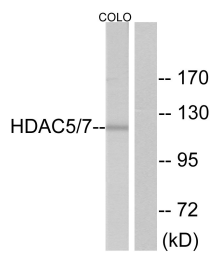
<b>Product Type</b>	Primary antibodies
<b>Short Description</b>	Rabbit polyclonal antibody anti-Histone Deacetylase 5 (440-520) is suitable for use in Western Blot, Immunohistochemistry, Immunofluorescence, Immunocytochemistry and ELISA research applications.
<b>Applications</b>	WB, IHC-P, IF, ICC, ELISA
<b>Host/Source</b>	Rabbit
<b>Reactivity</b>	Human, Mouse

### PRODUCT PROPERTIES

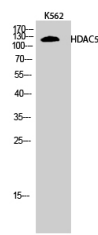
<b>Clonality</b>	Polyclonal
<b>Clone ID</b>	
<b>Concentration</b>	1 mg/mL
<b>Conjugation</b>	Unconjugated
<b>Purification</b>	The antibody was affinity-purified from rabbit anti-serum by affinity-chromatography.
<b>Dilution Range</b>	WB 1:500-1:2000 IHC 1:100-1:300 IF 1:200-1:1000 ELISA 1:20000
<b>Formulation</b>	PBS, 50% Glycerol, 0.5% BSA and 0.02% Sodium Azide.
<b>Isotype</b>	IgG
<b>Storage Instruction</b>	Store at -20°C for up to 1 year from the date of receipt, and avoid repeat freeze-thaw cycles.

### TARGET INFORMATION

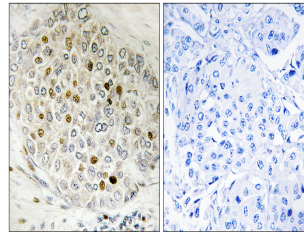
<b>Gene ID</b>	10014
<b>Gene Symbol</b>	HDAC5
<b>Uniprot ID</b>	HDAC5_HUMAN
<b>Immunogen</b>	The antiserum was produced against synthesized peptide derived from human HDAC5 at amino acid range 464-513
<b>Immunogen Region</b>	440-520
<b>Specificity</b>	HDAC5 polyclonal antibody (Histone Deacetylase 5) binds to endogenous Histone Deacetylase 5 at the amino acid region 440-520.
<b>Immunogen Sequence</b>	



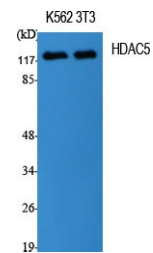
Western blot analysis of lysates from colo cells, using HDAC5 Antibody. The lane on the right is blocked with the synthesized peptide.



Western blot analysis of K562 cells using HDAC5 Polyclonal Antibody



Immunohistochemistry analysis of paraffin-embedded human breast carcinoma tissue, using HDAC5 Antibody. The picture on the right is blocked with the synthesized peptide.



Western blot analysis of various cells using HDAC5 Polyclonal Antibody

This product is suitable for in-vitro studies under the RESEARCH USE ONLY [RUO] licence. This product must not be used as for diagnostic or other medical purposes.  
St John's Laboratory Ltd, Knowledge Dock Business Centre, University Way, London, E16 2RD | Tel: 0208 223 3081