

Anti-HDAC2 antibody (330-410) (STJ93478)

STJ93478

GENERAL INFORMATION

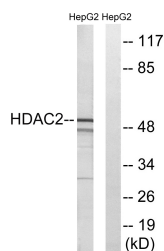
Product Type	Primary antibodies
Short Description	Rabbit polyclonal antibody anti-Histone Deacetylase 2 (330-410) is suitable for use in Western Blot, Immunohistochemistry, Immunofluorescence and ELISA research applications.
Applications	WB, IHC-P, IF-P, ELISA
Host/Source	Rabbit
Reactivity	Human, Mouse, Rat, Monkey

PRODUCT PROPERTIES

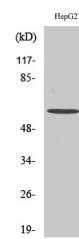
Clonality	Polyclonal
Clone ID	
Concentration	1 mg/mL
Conjugation	Unconjugated
Purification	The antibody was affinity-purified from rabbit anti-serum by affinity-chromatography.
Dilution Range	WB 1:500-1:2000 IHC 1:100-1:300 ELISA 1:40000
Formulation	PBS, 50% Glycerol, 0.5% BSA and 0.02% Sodium Azide.
Isotype	IgG
Storage Instruction	Store at -20°C for up to 1 year from the date of receipt, and avoid repeat freeze-thaw cycles.

TARGET INFORMATION

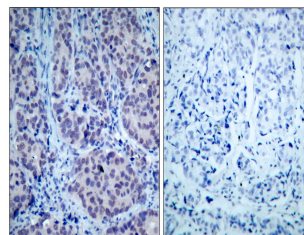
Gene ID	3066
Gene Symbol	HDAC2
Uniprot ID	HDAC2_HUMAN
Immunogen Region	The antiserum was produced against synthesized peptide derived from human HDAC2 at amino acid range 360-409
Immunogen Sequence	330-410
Specificity	HDAC2 polyclonal antibody (Histone Deacetylase 2) binds to endogenous Histone Deacetylase 2 at the amino acid region 330-410.



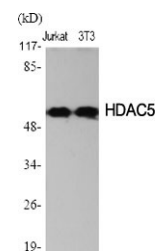
Western blot analysis of lysates from HepG2 cells, using HDAC2 Antibody. The lane on the right is blocked with the synthesized peptide.



Western blot analysis of HepG2 cells using HDAC2 Polyclonal Antibody diluted at 1: 2000



Immunohistochemistry analysis of paraffin-embedded human breast carcinoma tissue, using HDAC2 Antibody. The picture on the right is blocked with the synthesized peptide.



Western blot analysis of various cells using HDAC2 Polyclonal Antibody diluted at 1: 2000

This product is suitable for in-vitro studies under the RESEARCH USE ONLY [RUO] licence. This product must not be used as for diagnostic or other medical purposes.
St John's Laboratory Ltd, Knowledge Dock Business Centre, University Way, London, E16 2RD | Tel: 0208 223 3081