

Anti-NCAPG antibody (920-1000 C-Term) (STJ93469)

STJ93469

GENERAL INFORMATION

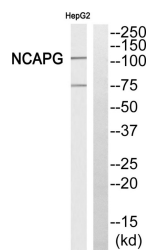
Product Type	Primary antibodies
Short Description	Rabbit polyclonal antibody anti-Condensin Complex Subunit 3 (920-1000 C-Term) is suitable for use in Western Blot and ELISA research applications.
Applications	WB, ELISA
Host/Source	Rabbit
Reactivity	Human, Rat, Mouse

PRODUCT PROPERTIES

Clonality	Polyclonal
Clone ID	
Concentration	1 mg/mL
Conjugation	Unconjugated
Purification	The antibody was affinity-purified from rabbit anti-serum by affinity-chromatography.
Dilution Range	WB 1:500-1:2000 ELISA 1:40000
Formulation	PBS, 50% Glycerol, 0.5% BSA and 0.02% Sodium Azide.
Isotype	IgG
Storage	Store at -20°C for up to 1 year from the date of receipt, and avoid repeat freeze-thaw cycles.
Instruction	

TARGET INFORMATION

Gene ID	64151
Gene Symbol	NCAPG
Uniprot ID	CND3_HUMAN
Immunogen	The antiserum was produced against synthesized peptide derived from human NCAPG at amino acid range 951-1000
Immunogen Region	920-1000 C-Term
Specificity	NCAPG polyclonal antibody (Condensin Complex Subunit 3) binds to endogenous Condensin Complex Subunit 3 at the amino acid region 920-1000 C-Term.
Immunogen Sequence	



Western blot analysis of NCAPG Antibody. The lane on the right is blocked with the NCAPG peptide.

This product is suitable for in-vitro studies under the RESEARCH USE ONLY [RUO] licence. This product must not be used as for diagnostic or other medical purposes.
St John's Laboratory Ltd, Knowledge Dock Business Centre, University Way, London, E16 2RD | Tel: 0208 223 3081