

Anti-GNAL antibody (10-90 Internal) (STJ93458)

STJ93458

GENERAL INFORMATION

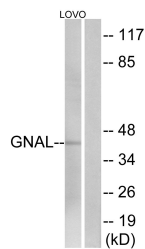
Product Type	Primary antibodies
Short Description	Rabbit polyclonal antibody anti-Guanine Nucleotide-Binding Protein G (Olf Subunit Alpha (10-90 Internal) is suitable for use in Western Blot, Immunohistochemistry, Immunofluorescence and ELISA research applications.
Applications	WB, IHC-P, IF-P, ELISA
Host/Source	Rabbit
Reactivity	Human, Mouse, Rat

PRODUCT PROPERTIES

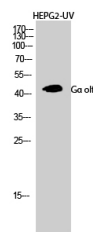
Clonality	Polyclonal
Clone ID	
Concentration	1 mg/mL
Conjugation	Unconjugated
Purification	The antibody was affinity-purified from rabbit anti-serum by affinity-chromatography.
Dilution Range	WB 1:500-1:2000 IHC 1:100-1:300 ELISA 1:20000
Formulation	PBS, 50% Glycerol, 0.5% BSA and 0.02% Sodium Azide.
Isotype	IgG
Storage Instruction	Store at -20°C for up to 1 year from the date of receipt, and avoid repeat freeze-thaw cycles.

TARGET INFORMATION

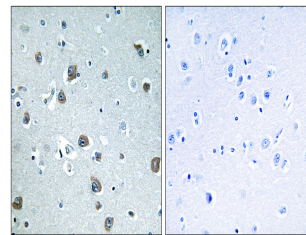
Gene ID	2774
Gene Symbol	GNAL
Uniprot ID	GNAL_HUMAN
Immunogen Region	The antiserum was produced against synthesized peptide derived from human GNAL at amino acid range 41-90
Immunogen Region	10-90 Internal
Specificity	GNAL polyclonal antibody (Guanine Nucleotide-Binding Protein G (Olf Subunit Alpha) binds to endogenous Guanine Nucleotide-Binding Protein G (Olf Subunit Alpha at the amino acid region 10-90 Internal.
Immunogen Sequence	



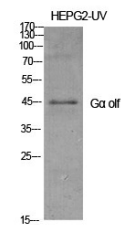
Western blot analysis of lysates from LOVO cells, using GNAL Antibody. The lane on the right is blocked with the synthesized peptide.



Western blot analysis of HEPG2-UV cells using G Alpha of Polyclonal Antibody diluted at 1: 1000



Immunohistochemistry analysis of paraffin-embedded human brain tissue, using GNAL Antibody. The picture on the right is blocked with the synthesized peptide.



Western blot analysis of various cells using G Alpha of Polyclonal Antibody diluted at 1: 1000

This product is suitable for in-vitro studies under the RESEARCH USE ONLY [RUO] licence. This product must not be used as for diagnostic or other medical purposes.
St John's Laboratory Ltd, Knowledge Dock Business Centre, University Way, London, E16 2RD | Tel: 0208 223 3081