

Anti-GSC2 antibody (100-180 C-Term) (STJ93444)

STJ93444

GENERAL INFORMATION

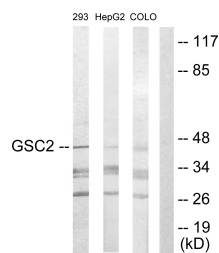
Product Type	Primary antibodies
Short Description	Rabbit polyclonal antibody anti-Homeobox Protein Goosecoid-2 (100-180 C-Term) is suitable for use in Western Blot and ELISA research applications.
Applications	WB, ELISA
Host/Source	Rabbit
Reactivity	Human, Mouse

PRODUCT PROPERTIES

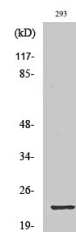
Clonality	Polyclonal
Clone ID	
Concentration	1 mg/mL
Conjugation	Unconjugated
Purification	The antibody was affinity-purified from rabbit anti-serum by affinity-chromatography.
Dilution Range	WB 1:500-1:2000 ELISA 1:20000
Formulation	PBS, 50% Glycerol, 0.5% BSA and 0.02% Sodium Azide.
Isotype	IgG
Storage Instruction	Store at -20°C for up to 1 year from the date of receipt, and avoid repeat freeze-thaw cycles.

TARGET INFORMATION

Gene ID	2928
Gene Symbol	GSC2
Uniprot ID	GSC2_HUMAN
Immunogen	The antiserum was produced against synthesized peptide derived from human GSC2 at amino acid range 131-180
Immunogen Region	100-180 C-Term
Specificity	GSC2 polyclonal antibody (Homeobox Protein Goosecoid-2) binds to endogenous Homeobox Protein Goosecoid-2 at the amino acid region 100-180 C-Term.
Immunogen Sequence	



Western blot analysis of lysates from 293, HepG2, and COLO205 cells, using GSC2 Antibody. The lane on the right is blocked with the synthesized peptide.



Western blot analysis of various cells using GSC2 Polyclonal Antibody diluted at 1:1000 cells nucleus extracted by Minute TM Cytoplasmic and Nuclear Fractionation kit (SC-003, Inventibiotec, MN, USA).

This product is suitable for in-vitro studies under the RESEARCH USE ONLY [RUO] licence. This product must not be used as for diagnostic or other medical purposes.
St John's Laboratory Ltd, Knowledge Dock Business Centre, University Way, London, E16 2RD | Tel: 0208 223 3081